

# CX-Programmer

## Introduction Guide

**CX-Programmer Information**

Work Online	Program Monitor	Run	Force Off	Next Addr.	Find bit	Information Show/Hide
Ctrl+W	Ctrl+M	Ctrl+R	Ctrl+K	N	SPACE	
Ctrl+W	Ctrl+3	Force On	Force Cancel	Prev. Jump	Comment	Ctrl+Shift+I
		Ctrl+J	Ctrl+L	B	L	

Assembly\_Machine\_1\_Main - CX-Programmer - [(Stopped) - Assembly\_machine\_1...]

File Edit View Insert PLC Program Tools Window Help

Project: Assembly\_machine\_1[CS1G-H] Stop/Program Mc

1 Mar. 2000, Added by Tanaka, Maintenance Dept.

0.01 5.00 5.01 5.03 5.04 5.05

SENSOR-1 A-sensor-E S-sensor-S Fatal Stop Compres pre. Safety fence1

1.01 COIL-1

Safety fence2 Safety mat

2 11 Counting the volume of production

1.00 COIL-0

2.00 COIL-2

3 14

1.01 COIL-1

2.00 COIL-2

3.00 COIL-3

++(590) D0 Production &0

4 17 Clearing display of the production volume

1.01 P\_1s

COIL-1 1.0 second cl...

++(590) D100 Operating ti... &0

Project / Global Name: Address or Value: 1.00 Comment: COIL-0

PLC Name	Name	Address	Data Type / Format	FB Usage	V
Assembly_machine_1	T0		CHANNEL (Hex,Channel)	0	
Assembly_machine_1		0.00	BOOL (On/Off,Contact)	0	
Assembly_machine_1		1.00	BOOL (On/Off,Contact)	0	
Assembly_machine_1		0.01	BOOL (On/Off,Contact)	0	
Assembly_machine_1		5.00	BOOL (On/Off,Contact)	0	

StartUp process / Assembly 1 / Assembly 2

For Help, press F1

Compile / Find Report / Transfer /

rung 2 (0, 0) - 100%

	F1	F2	F3	F4	F5	F6	F7	F8	F9	F10	F11	F12
DMRDN	Help	OpenProj	SaveProj	Print	SelectNet	Ins Row	Del Row	Inst	TIM	CNT	Workspace	Ins Rung
Shift	ContextHlp	Force Set	Set/Reset	Close	BlockEdit	ProgCheck	RungEdit	ProgEdit	Connect	AdtSymEdit	AddFileTool	NextDocked
Ctrl	Help	Force Set	ForceReset	Close	Canc Force	Annotation	CancelFrc	Annotation	SymbolCmt	MonitorHEX	Monitoring	Watch

## Introduction

- Please be sure to read and understand Precautions and Introductions in *CX-Programmer Operation Manual* before using the product.
- This Guide describes the basic operation procedure of CX-Programmer. Refer to the Help or the Operation Manual of the PDF file for detailed descriptions.
- Acrobat Reader 5.0 or later is required to read the PDF files.
- You can display the PDF files from the [Start] menu on your desktop after installing the CX-Programmer.
- The screen views used in this guide may be different from the actual view, and be subject to change without notice.
- The product names, service names, function names, and logos described in this guide are trademarks or registered trademarks of their respective companies.
- The symbols (R) and TM are not marked with trademarks and registered trademarks in this guide respectively
- The product names of the other companies may be abbreviated in this guide.

# Contents

## Available PC

## Available Device Types

### Chapter 1 Installation - Startup

1. Installation .....	1-1
1-1. Installation of CX-Programmer .....	1-1
1-2. Online Registration .....	1-5
2. Startup of CX-Programmer .....	1-7
3. New Project Opening and Device Type Settings .....	1-8
4. Main Window .....	1-9
4-1. Compatible SYSWIN Key Allocation .....	1-10
4-2. Section .....	1-11
4-3. Deletion and Display of Unnecessary Windows .....	1-13
5. Program Creation .....	1-14
5-1. Entry of Normally Open Contact .....	1-15
5-2. Entry of Coil .....	1-16
5-3. Edit of Symbol Comment .....	1-18
5-4. Entry of Rung Comment .....	1-19
5-5. Entry of Normally Closed Contact .....	1-19
5-6. Entry of Attached Comments .....	1-20
5-7. Entry of Differential Contact...Up .....	1-21
5-8. Entry of Differential Contact...Down .....	1-21
5-9. Entry of Vertical...Up .....	1-22
5-10. Entry of Vertical...Down .....	1-22
5-11. Entry of Advanced Instructions 1 - Entry of Strings .....	1-23
5-12. Entry of Advanced Instructions 1 - Useful Functions .....	1-24
5-13. Entry of Auxiliary Relay - 1.0 Second Clock Pulse Bit .....	1-25
5-14. Entry of Advanced Instructions 2 - Entry of Differential .....	1-26
5-15. Entry of OR Rung .....	1-27
5-16. Entry of Advanced Instructions 3 - Entry by Fun No. ....	1-28
5-17. Entry of Timer Instructions .....	1-29
5-18. Entry of Counter Instructions .....	1-30
5-19. Edit of Rungs...Copy & Paste .....	1-31
5-20. Entry of END Instruction .....	1-31

### Chapter 2 Online Operation

1. Program Error Check (Compile) .....	2-1
2. Going Online .....	2-2
3. Monitoring .....	2-3
4. Monitoring - 2 Monitoring Many Locations in Program at Once .....	2-4
5. Monitoring - 3 Monitoring in Hex .....	2-4
6. Monitoring - 4 Watch Window .....	2-5
7. Monitoring - 5 Present Value Change and Binary Monitoring in Watch Window .....	2-6
8. Useful Functions of Watch Window .....	2-7
9. Monitoring - 6 Watch Window - 2 .....	2-8
10. Monitoring - 7 Rung-wrap of Long Rung on Display .....	2-9
11. Monitoring - 8 Differential Monitor .....	2-10
12. Force On/Off .....	2-11
13. Displaying List of Forced-on/off Bits .....	2-11
14. Changing Set Value of Timer .....	2-12
15. Changing Present Value of Timer .....	2-12
16. Find Function - 1 Find from Address Reference Tool .....	2-13
17. Find Function - 2 Retrace Find of Ladders .....	2-14
18. Find Function - 3 Find by Keyword in Comment .....	2-16
19. Find Function - 4 Go To Rung Comment .....	2-17
20. Find Function - 5 Find Bit Addresses .....	2-18
21. Online Edit .....	2-19
Useful Functions .....	Appendix

## Available PC

### Hardware Requirements

Item \ OS	Windows 2000 Service Pack 2 or later /Windows XP	Windows Vista *1
PC	IBM PC/AT Compatible	IBM PC/AT or compatible with a processor recommended by Microsoft.
CPU	DOS/V (IBM AT compatible) computer with a Pentium II 333 MHz processor or higher. Pentium III 1GHz or higher is recommended.	Processor recommended by Microsoft. 1 GB or higher is recommended.
Memory *2	256MB or higher required. 512MB or higher is recommended.	512MB or higher required. 1GB or higher is recommended.
Hard disk space	550MB or more free space	
Display	800X600 SVGA or grater	
CD-ROM /DVD-ROM drive	At least one drive	
Communications Port	At least one USB Port or RS-232C Port	

\*1: The following restrictions apply when CX-Programmer is used with Windows Vista.

Help files with an HLP file name extension cannot be accessed. These help files can be accessed if the program distributed by Microsoft for Windows Vista is installed. Refer to the Microsoft homepage listed below or contact Microsoft for details on installing the file. The download page is automatically displayed if an HLP help file is opened while the user is connected to the Internet.  
<http://support.microsoft.com/kb/917607/en-us>

\*2: Required memory (RAM) size depends on the size of your programs to be created. If the required memory (RAM) size is larger than your PC's memory (RAM) size, operation of CX-Programmer might be slowed down.

For details of PC in which CX-One can be installed, refer to "CX-One Setup Manual", Section 2 "Installation and Uninstallation".

## Available Device Types

CX-Programmer supports the following PLC (Programmable Logic Controller) types.

Series	CPU Unit Type
CS	CS1H-CPU67/66/65/64/63 (-V1) CS1G-CPU45/44/43/42 (-V1) CS1G-CPU45H/44H/43H/42H CS1H-CPU67H/66H/65H/64H/63H CS1D-CPU67H/65H/CPU67S/65S/44S/42S
CJ	CJ2H-CPU68-EIP/67-EIP/66-EIP/65-EIP/64-EIP CJ1G-CPU45/44 CJ1M-CPU23/22/21/13/12/11 CJ1G- CPU45H/44H/43H/42H CJ1H-CPU66H/65H CJ1H-CPU67H-R/66H-R/65H-R/64H-R
C1000H	C1000H-CPU01 (-V1)
C2000H	C2000H-CPU01 (-V1) (Simplex system only)
C200H	C200H-CPU01/02/03/11/21/22/23/31
C200HX C200HG C200HE	C200HX-CPU34/44/54/64 C200HG-CPU33/43/53/63 C200HE-CPU11/32/42
C200HX-Z C200HG-Z C200HE-Z	C200HX-CPU34-Z/CPU44-Z/CPU54-Z/CPU64-Z/CPU65-Z/CPU85-Z C200HG-CPU33-Z/CPU43-Z/CPU53-Z/CPU63-Z C200HE-CPU11-Z/CPU32-Z/CPU42-Z
C200HS	C200HS-CPU01/03/21/23/31/33
CP1H/CP1L	CP1H-X□/XA□/Y□ CP1L-M□/L□
CPM2□(*1)	CPM2A-20CD/30CD/40CD/60CD CPM2C-10CD/10C1D/20CD/20C1D
CPM2C-S1□ (*1)	CPM2C-S100C/110C CPM2C-S110C-DRT
CPM1/CPM1A (*1)	CPM1(A)-10CDR/20CDR/30CDR/40CDR (-V1)
CQM1H	CQM1H-CPU11/21/51/61
CQM1	CQM1-CPU11/21/41/42/43/44/45
CV1000 (*2)	CV1000-CPU01 (-V1)
CV2000 (*2)	CV2000-CPU01 (-V1)
CV500 (*2)	CV500-CPU01 (-V1)
CVM1	CVM1-CPU01/11 (-V1) (-V2)/CPU21-V2
IDSC	IDSC-C1DR-A/C1DT-A
SRM1 (*1)	SRM1-C01/C02 (-V1) (-V2)
SYSMAC Board, or SYSMAC CS1 Board (Internal connection of a PC with the SYSMAC board that is built-in the PC where CX-Programmer is installed)	C200PC-ISA01 (C200HG-CPU43 *3) C200PC-ISA02-DRM (C200HG-CPU43 *3) C200PC-ISA02-SRM (C200HG-CPU43 *3) C200PC-ISA03 (C200HG-CPU43 *3) C200PC-ISA03-DRM (C200HG-CPU43 *3) C200PC-ISA03-SRM (C200HG-CPU43 *3) C200PC-ISA13-DRM (C200HX-CPU64 *3) C200PC-ISA13-SRM (C200HX-CPU64 *3) CS1PC-PCI01-DRM (CS1G-CPU45 *4) CS1PC-PCI01H-DRM (CS1G-CPU45H *4)
FQM1 Series Flexible Motion Controller	FQM1-CM001/MMA21 / MMP21

\*1: For WS02-CXPC2-V□ (one license (limited to micro PLCs)), only these PLC types are available.

\*2: CX-Programmer does not support SFC.

\*3: To connect with SYSMAC Board, specify the PLC types in parentheses. Only when selecting these PLC types, you can select "SYSMAC Board" as a network type.

\*4: To connect with SYSMAC CS1 Board, specify PLC types in parentheses. Only when selecting these PLC types, you can select "CS1 Board" as a network type.



**Chapter 1**  
**Installation to Startup**

**CX-Programmer**



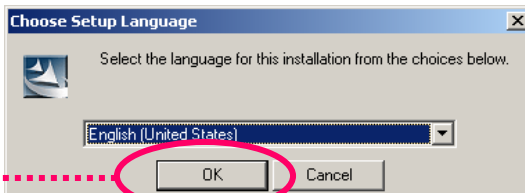
## 1. Installation procedure of CX-Programmer

Before installation of CX-Programmer, you must:

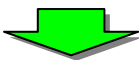
- terminate all Windows programs, and
- uninstall older version of CX-Programmer and peripheral tools (such as CX-Protocol) if they are already installed.
- Installation takes about 5 to 20 minutes depending on your PC. (5 minutes for a PC with CPU: Celeron2.2GHz, main memory: 512MB, and CD-ROM drive: 48x)
- To change/modify/delete CX-Programmer after installation, refer to the PDF manual "CX-Programmer Operation Manual", Chapter 2 "Installation and Uninstallation".

### 1-1. Installing CX-Programmer

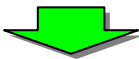
Insert the CX-Programmer installation disk (CD-ROM) to your PC's CD-ROM drive. [Choose Setup Language] dialog box is displayed. Default language of the OS on your PC is automatically selected. Check if the language is appropriate, then click [OK].



Click [OK].



CX-Programmer splash screen is displayed, then CX-Programmer installation is started.





Installation to Startup



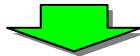
Opening a new project



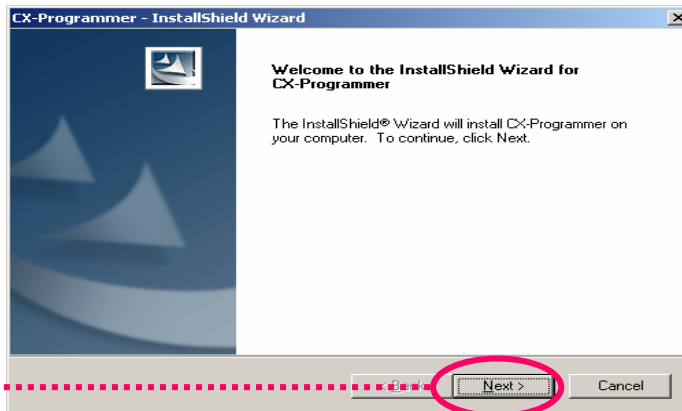
Device type settings



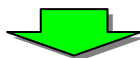
Creating a program



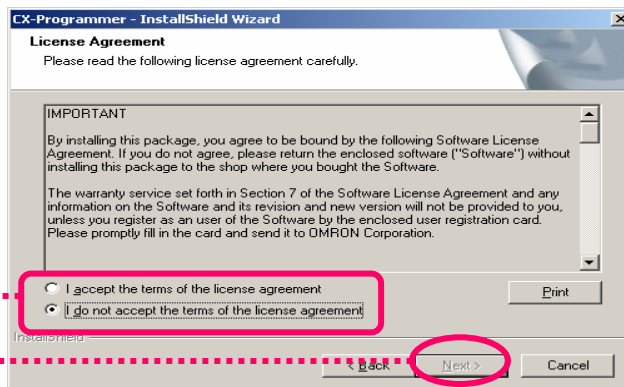
CX-Programmer setup wizard is started.



Click [Next].

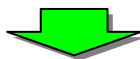


[License Agreement] dialog box is displayed. Read the software license agreement carefully. If you agree with all items, select [I accept the terms of the license agreement] radio button and click [Next] button.

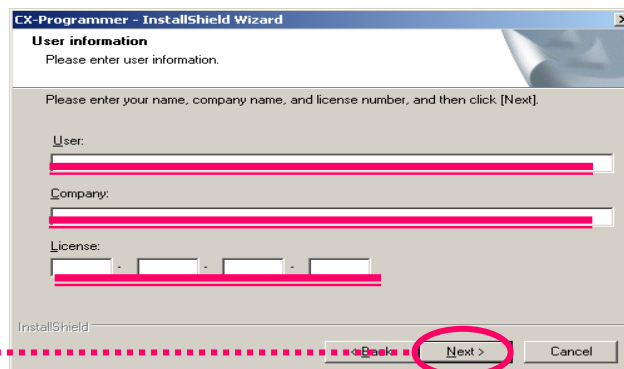


Select the radio button.

Click [Next].

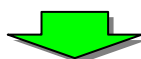


[User information] dialog box is displayed.



Enter [User], [Company], [License] (product serial number of CX-Programmer).

Click [Next].



Installation  
to Startup



Opening a  
new project

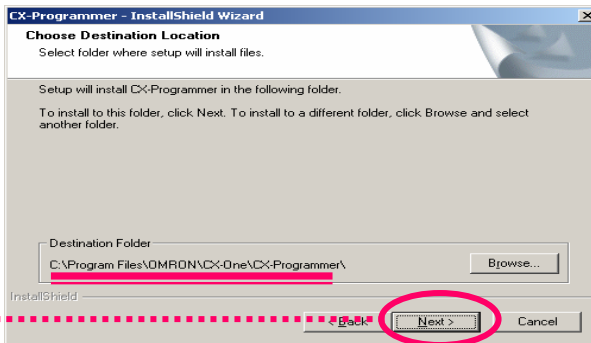


Device type  
settings



Creating a  
program

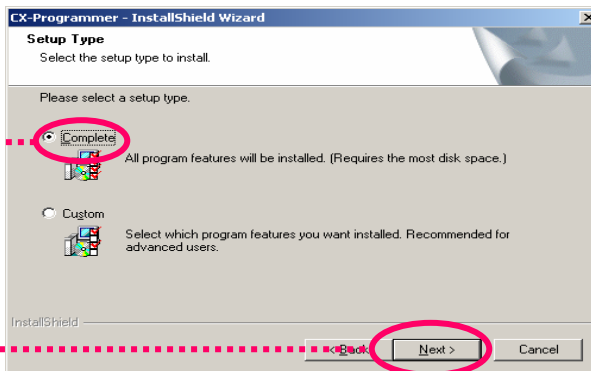
[Choose Destination Location] dialog box is displayed.



Select an installation  
folder, then click [Next].



[Setup Type] dialog box is displayed.

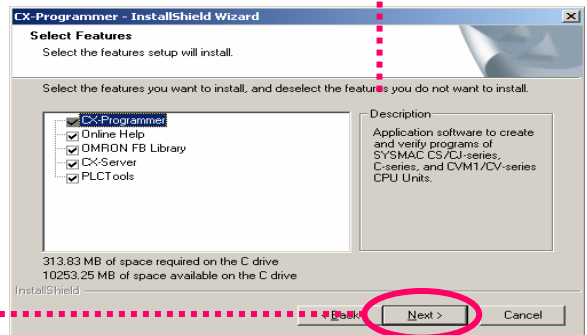


Select the radio button  
[Complete].

Click [Next].

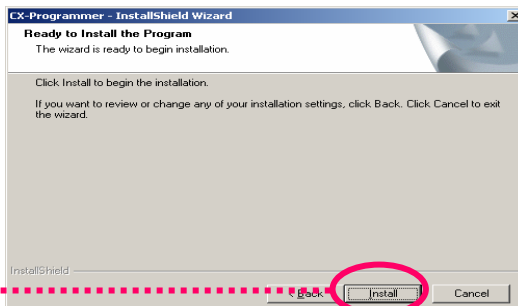
By selecting [Custom], you can  
individually select and install a  
peripheral tool.

Read the message and  
click [Next].



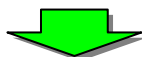
If OMRON FB Library is selected, [Choose Destination Location] dialog box of OMRON FB Library is displayed.

[Ready to Install the Program] dialog box is displayed.



Click [Install].

CX-Programmer installation is started.



Installation  
to Startup



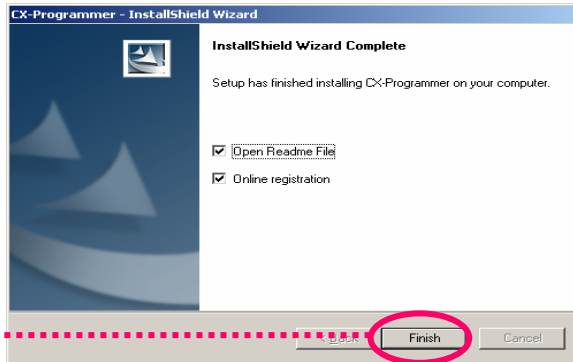
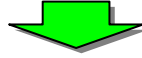
Opening a  
new project



Device type  
settings



Creating a  
program



Click [Finish].

A dialog box (left) is displayed.  
Click [Finish] button to finish the  
installation wizard.  
Now installation is completed.

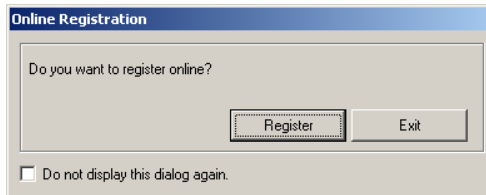
By checking [Online registration]  
check box, you can proceed to  
online registration.



## 1-2. Online Registration

If you have Internet environment for the installed PC, you can perform online user registration.

After installation is completed, [Online Registration] dialog box is displayed.



If you click [Register] button, your Web browser is started to connect to “Omron’s CX-One Web site”.(\*1) (\*2)

\*1: If you click [Exit] button to cancel online registration, [Online Registration] dialog box is displayed every time CX-Programmer is started.

\*2: If you do not have Internet environment, or you do not want to register online, fill and send the user registration card that comes with the product.

### MEMO

Use to record license No. etc.



Installation to Startup



Opening a new project



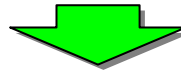
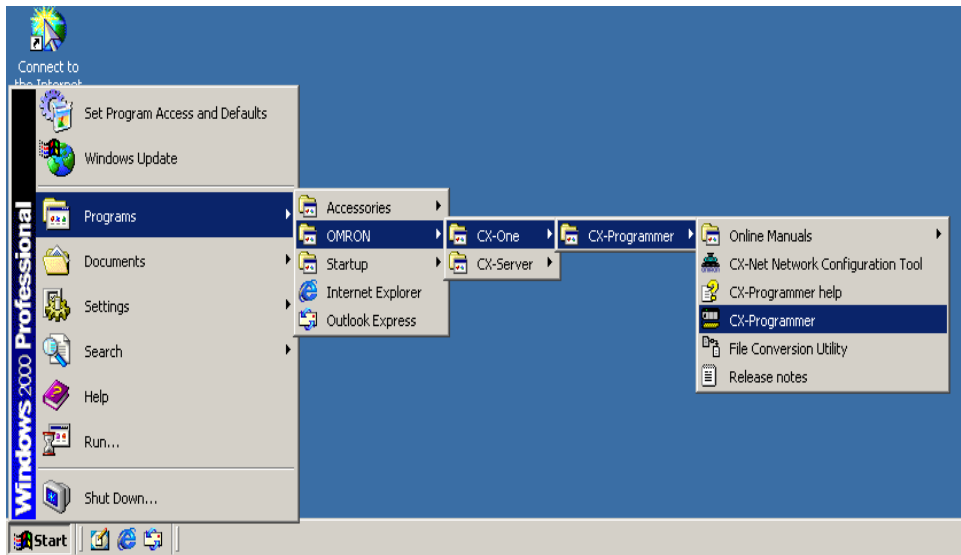
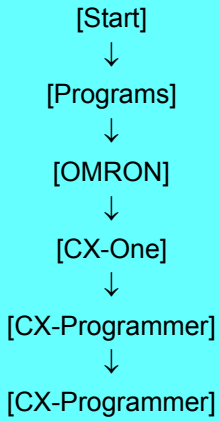
Device type settings



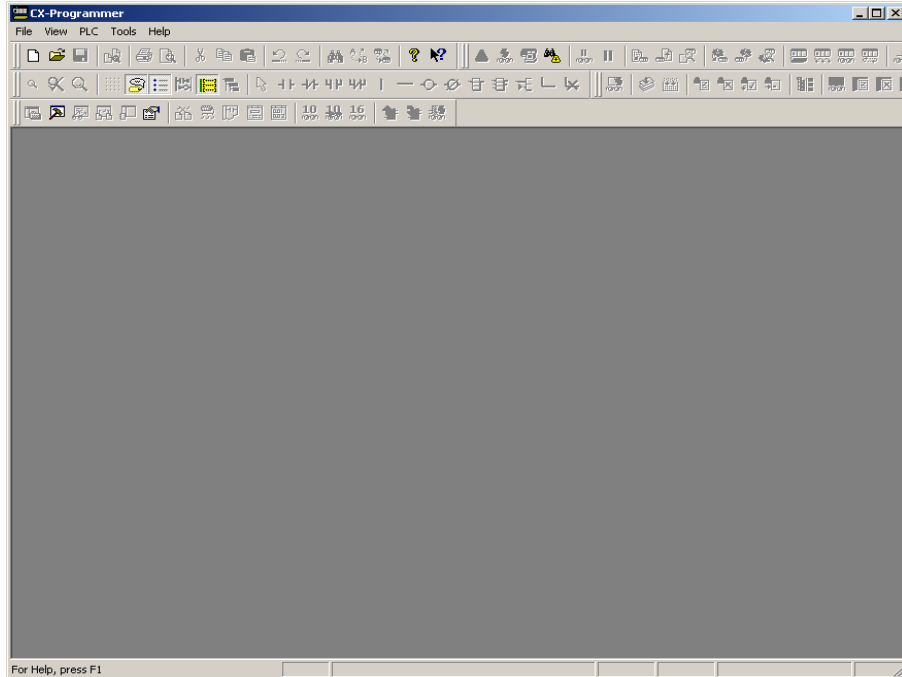
Creating a program

## 2. Startup of CX-Programmer

Windows task bar



The initial screen when starting up CX-Programmer is displayed.



Installation to Startup



Opening a new project



Device type settings

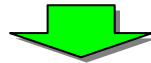
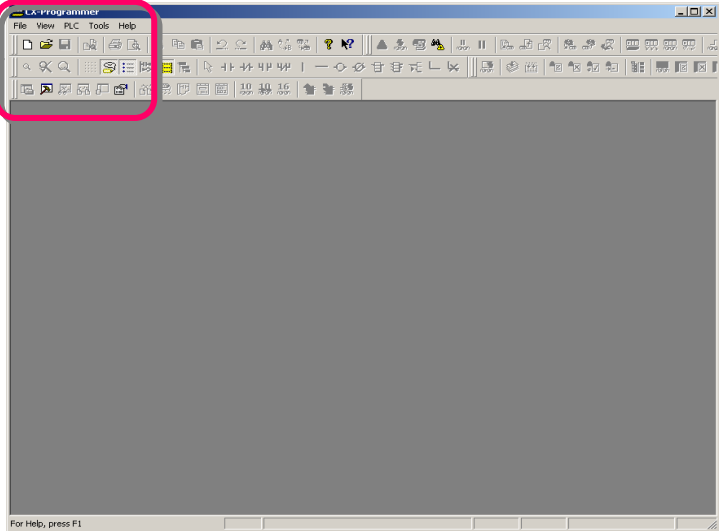
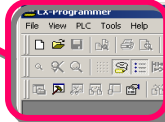
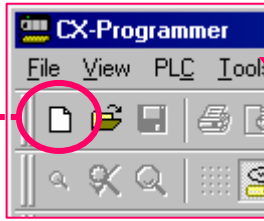


Creating a program

### 3. New Project Opening and Device Type Settings

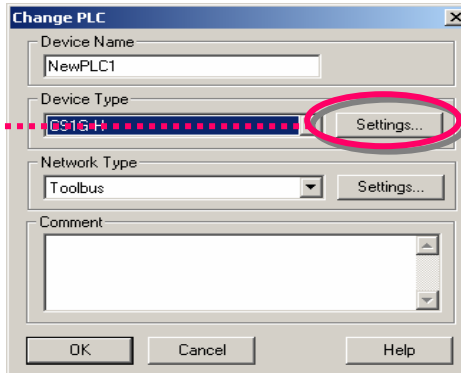
Click the toolbar button [New] in CX-Programmer.

Click

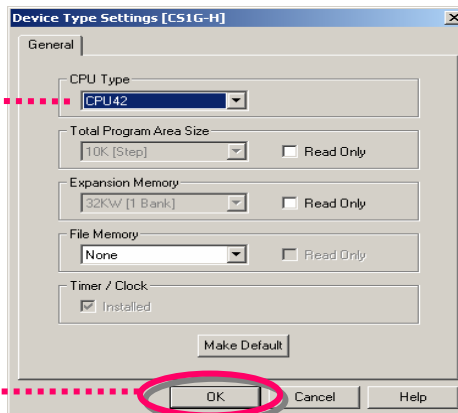


Click the left mouse button.

Settings...



Click the left mouse button on the "Settings" button to show the [Device Type Settings] dialog.



Click the left mouse button on [Down Arrow] and select a CPU type.

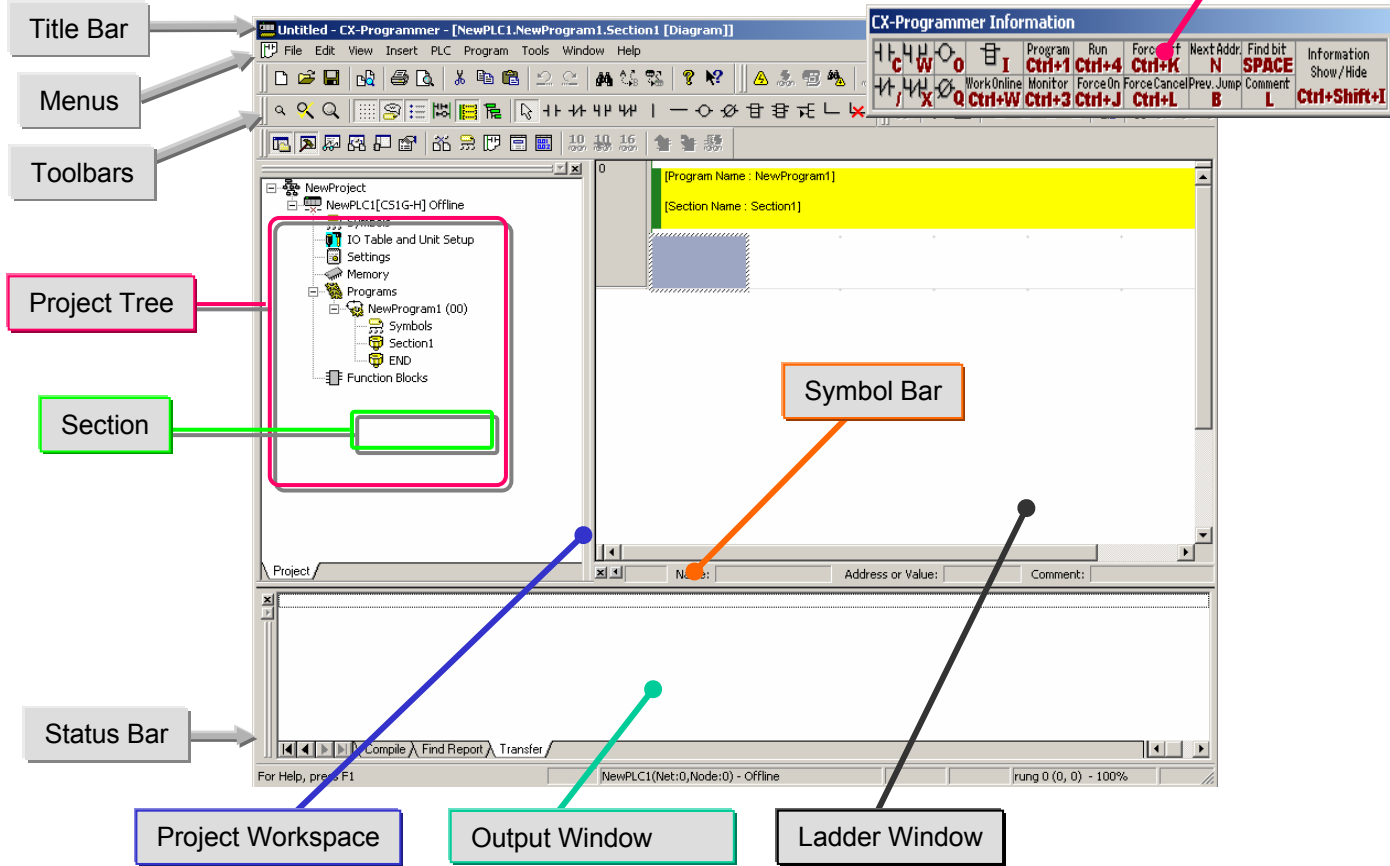
OK

Click [OK] to decide the selected CPU type.

## 4. Main Window

Each function of the main window is explained here.

Information Window



Name	Contents/Function
Title Bar	Shows the file name of saved data created in CX-Programmer.
Menus	Enable you to select menu items.
Toolbars	Enable you to select functions by clicking icons. Select [View] -> [Toolbars], and you can select toolbars to be displayed. Dragging toolbars enables you to change the display positions by the group.
Section	Enables you to divide one program into a given number of blocks. Each can be created and displayed.
Project Workspace Project Tree	Controls programs and data. Enables you to copy data by the element by executing Drag and Drop between different projects or within a project.
Ladder Window	A screen for creating and editing a ladder program.
Output Window	<ul style="list-style-type: none"> <li>Shows error information in compiling (error check).</li> <li>Shows the results of searching for contacts/coils in the list form.</li> <li>Shows error details when errors occurred while loading a project file.</li> </ul>
Status Bar	Shows information such as a PLC name, online/offline, location of an active cell.
Information Window	Displays a small window to show the basic shortcut keys used in CX-Programmer. Select [View] -> [Information Window] to show or hide the Information window.
Symbol Bar	Displays the name, address or value, and comment of the symbol presently selected by the cursor.

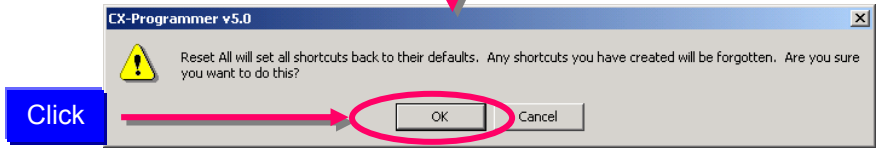
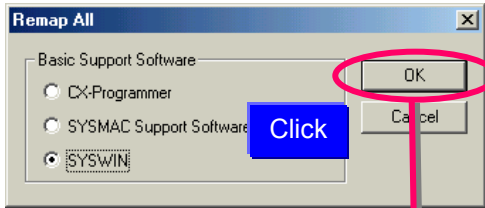
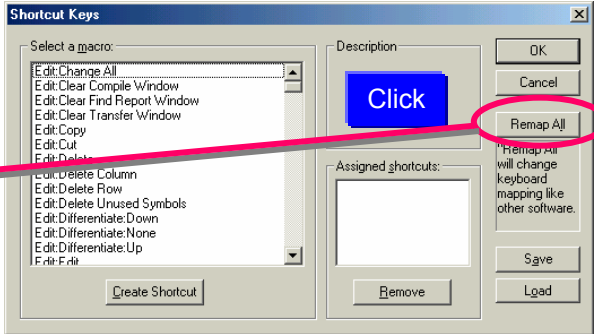


# 4-1. Compatible SYSWIN Key Allocation

The keyboard mapping function allows the function keys to operate like SYSWIN.

Select the [Tools] -> [Keyboard Mapping...] menu.

Function keys will be available for entering ladder programs.

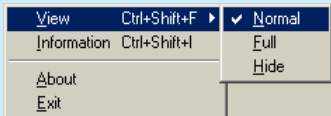


After the above operations, the key allocations will be changed and become compatible with SYSWIN.

When SYSWIN key allocation is selected, a key operation guide will be displayed at the bottom of the display.



Click the icon shown in the task bar on the right-bottom of the display.



Display in Normal View

OMRON	F1	F2	F3	F4	F5	F6	F7	F8	F9	F10	F11	F12
	Help	- / -	- / / -	--		- ( / )	- ( / / )	Inst	TIM	CNT	Workspace	Ins Rung

When **Shift** is pressed

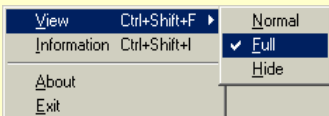
OMRON	F1	F2	F3	F4	F5	F6	F7	F8	F9	F10	F11	F12
Shift	ContextHlp	OpenProj	SaveProj	Print	SelectNet	Ins Row	Del Row	ProgCheck	Connect		AddRefTool	NextDocked

When **Ctrl** is pressed

OMRON	F1	F2	F3	F4	F5	F6	F7	F8	F9	F10	F11	F12
Ctrl	Help		Set/Reset		BlockEdit		RungEdit	SL Edit	AdtSymEdit	Forcus	Monitoring	Watch

When **Alt** is pressed

OMRON	F1	F2	F3	F4	F5	F6	F7	F8	F9	F10	F11	F12
Alt		Force Set	ForceReset	Close	Canc Force		CancAllFrc	Annotation	SymbolCmt	MonitorHEX		



Display in Full View

OMRON	F1	F2	F3	F4	F5	F6	F7	F8	F9	F10	F11	F12
	Help	- / -	- / / -	--		- ( / )	- ( / / )	Inst	TIM	CNT	Workspace	Ins Rung
Shift	ContextHlp	OpenProj	SaveProj	Print	SelectNet	Ins Row	Del Row	ProgCheck	Connect		AddRefTool	NextDocked
Ctrl	Help		Set/Reset		BlockEdit		RungEdit	SL Edit	AdtSymEdit	Forcus	Monitoring	Watch
Alt		Force Set	ForceReset	Close	Canc Force		CancAllFrc	Annotation	SymbolCmt	MonitorHEX		

## 4-2. Section

Section is a function to create/display a "block" of a program divided per function. It improves not only the visibility of a program but also the development productivity by reusing components if the program consists of similar controls, because copy and paste on the program tree are available.

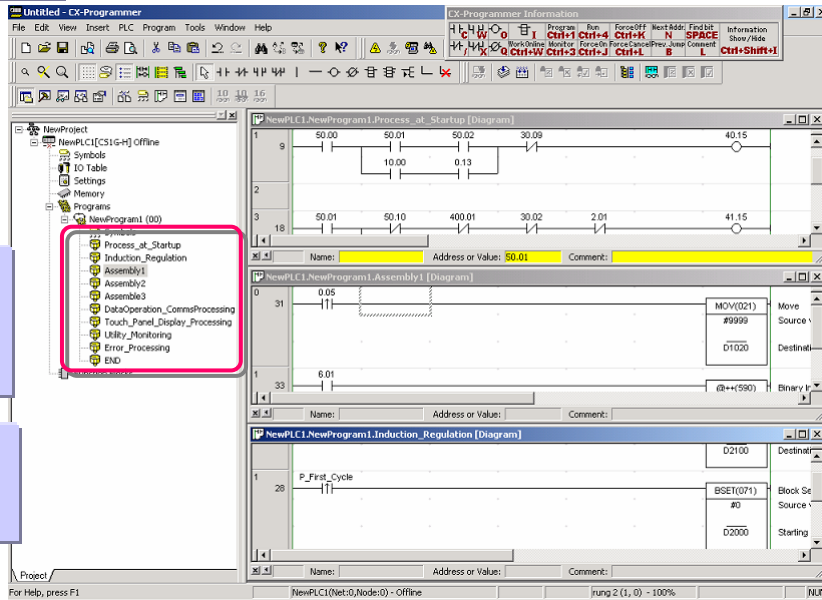
Moreover, program upload by section is possible and it enables you to do online operation smoothly.

### Example

Giving names indicating the contents of processing or controls is possible.

Changing the order of sections and copy & paste are possible by drag & drop with a mouse.

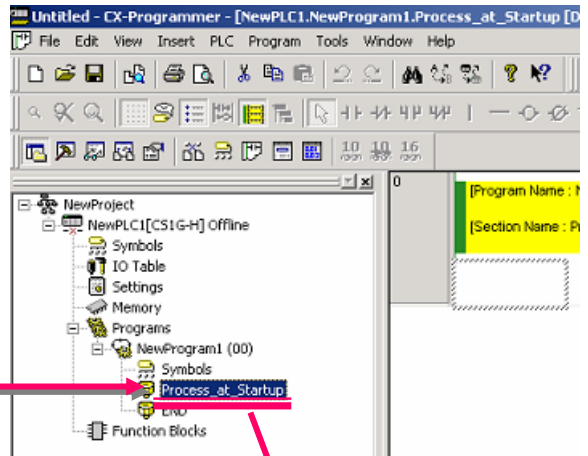
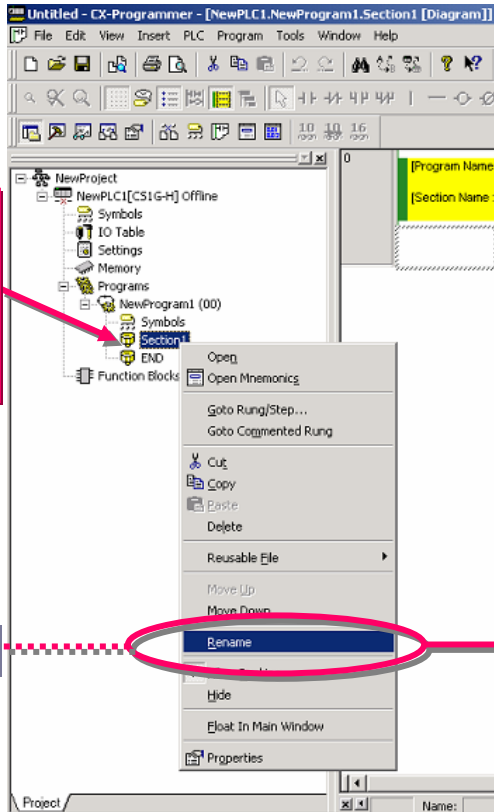
There is no limit on the number of sections per program.



Changing a section name

Click the right button of the mouse on the section whose name is to be changed.

Select [Rename].

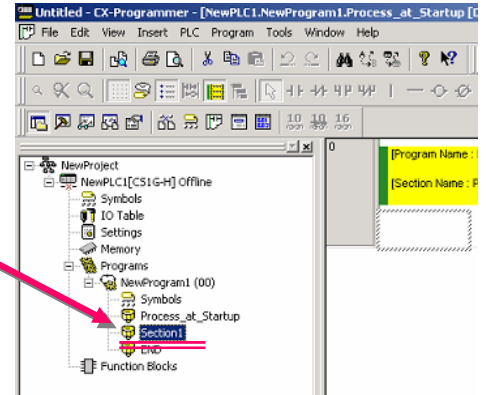
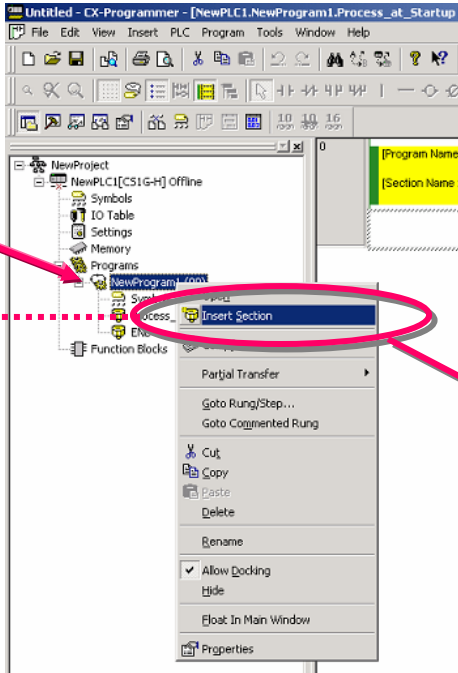


Enter a given name.

## Addition of a section

Click the right mouse button on [NewProgram1].

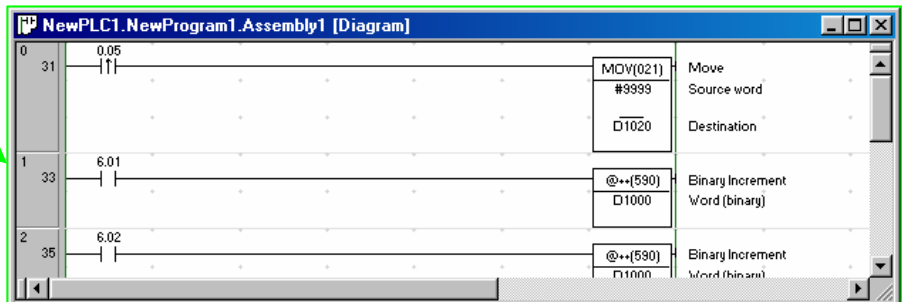
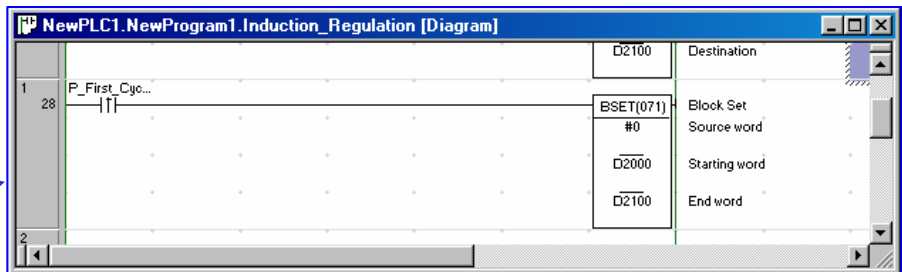
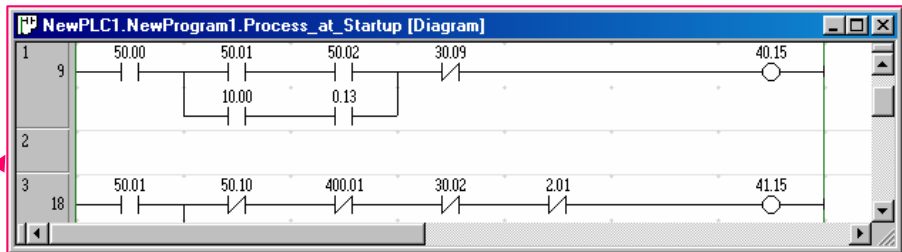
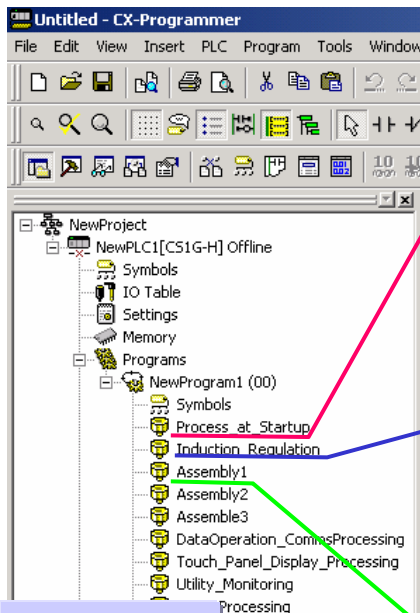
Select [Insert Section].



Perform the same operation as the previous page to name the inserted section.

It is possible to go to each section (a ladder block) from a section list.

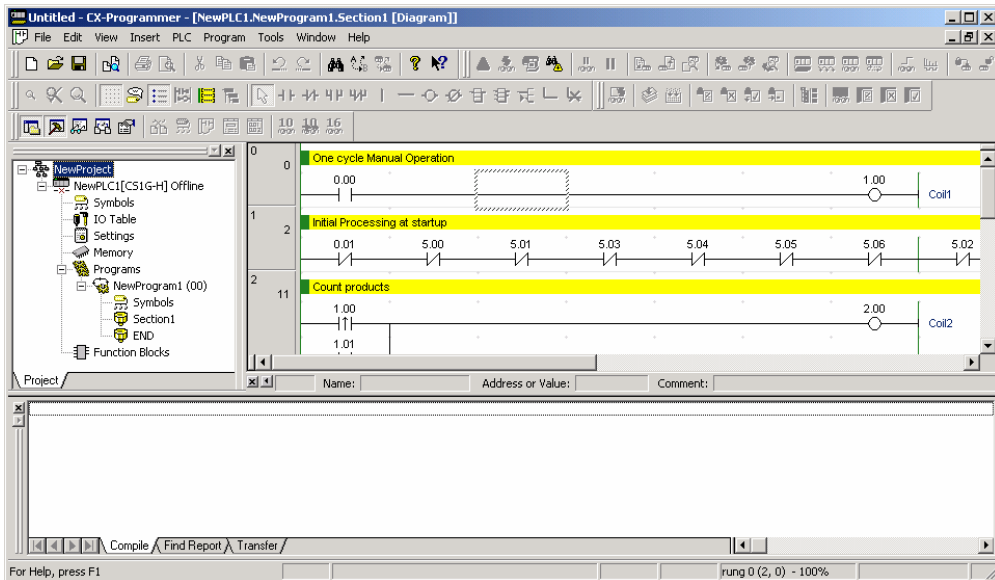
As checking the global image (control flow) of a program on the section list, you can go to a specified section.



Double-click a section that you want to check its ladder.

### 4-3. Deletion and Display of Unnecessary Windows

Normal screen

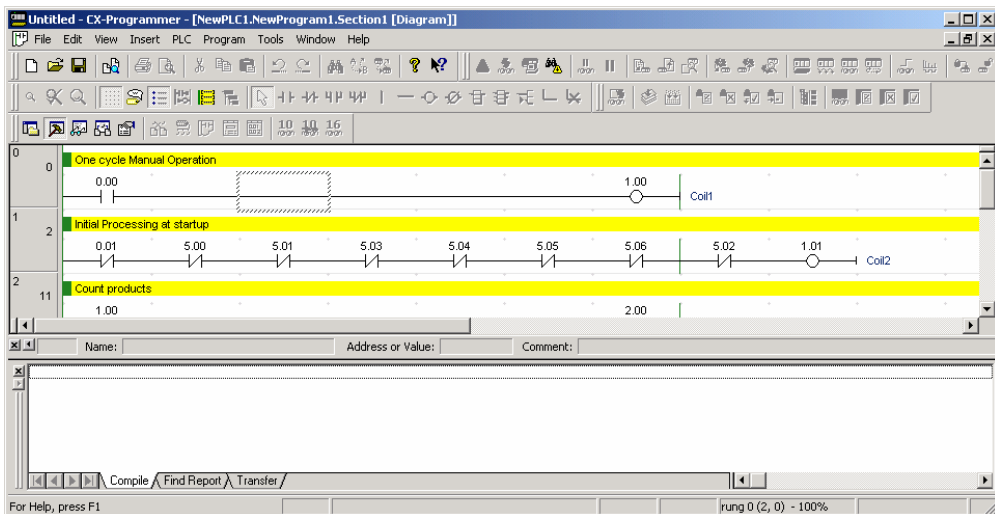


To delete Project Workspace,

Press from a keyboard

**Alt + 1**

Press [Alt]+[1] to show Project Workspace again.

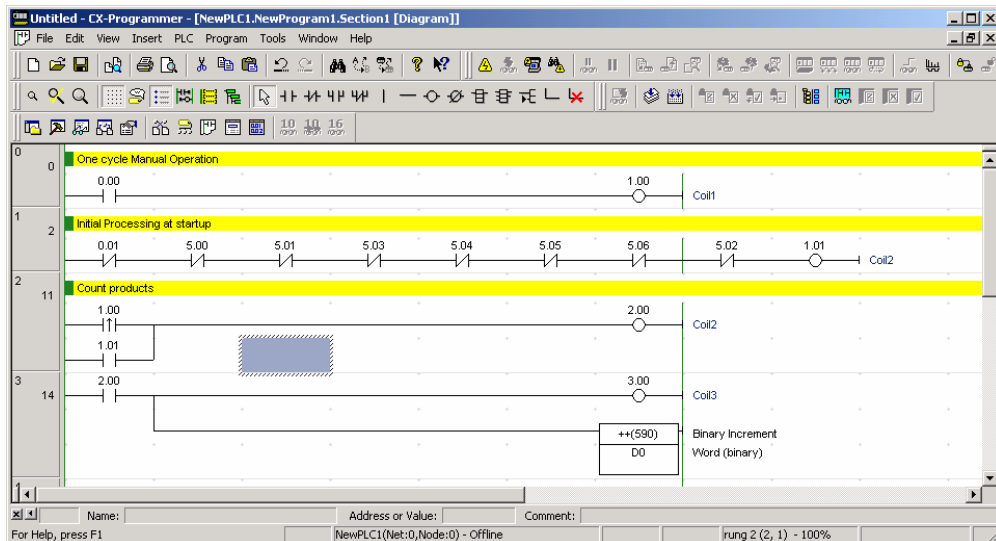


To delete Output Window,

Press from a keyboard [ESC] or

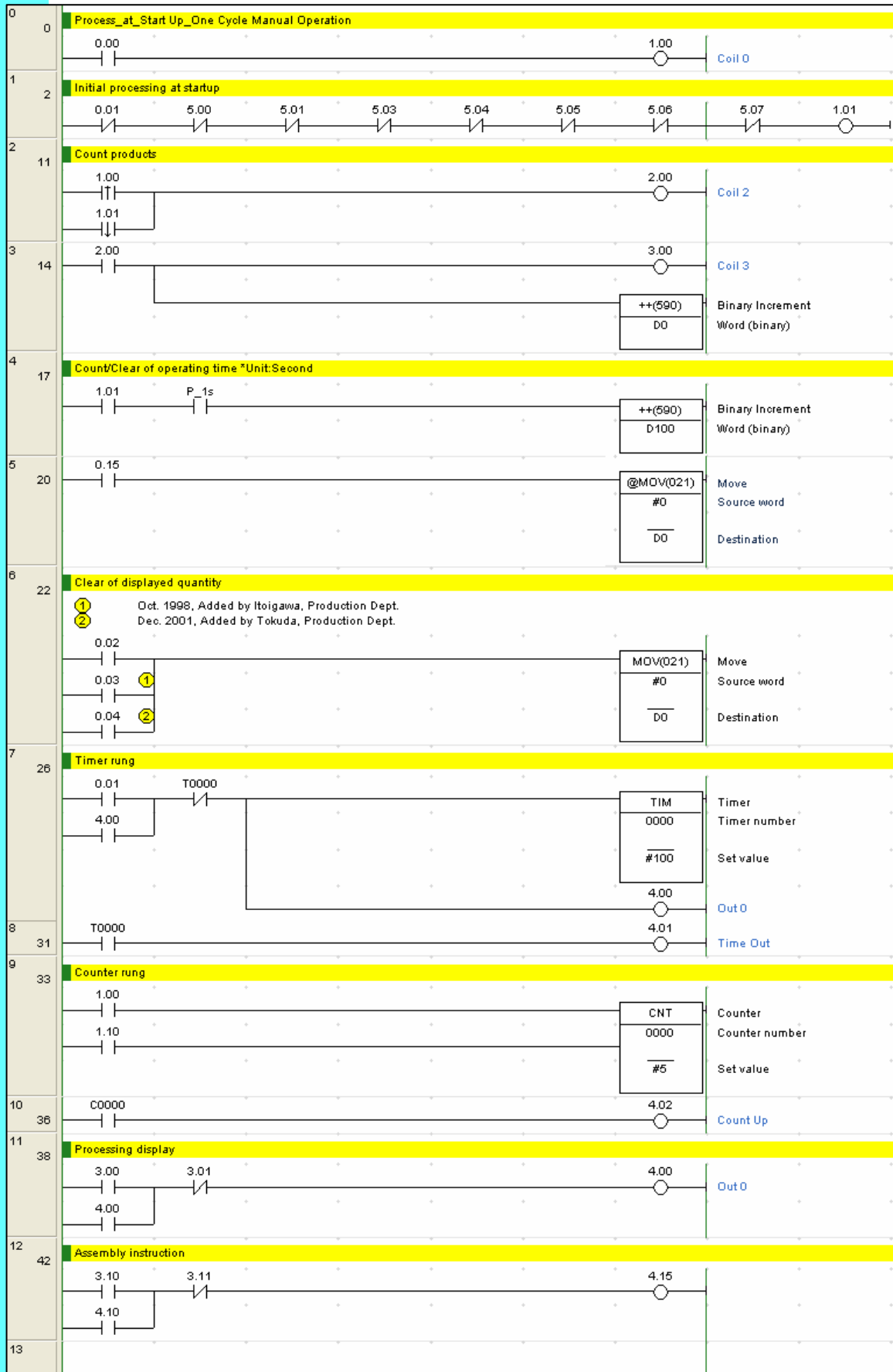
**Alt + 2**

Press [Alt]+[2] to show Output Window again.



## 5. Program Creation

Coding of a simple program is explained here.



Installation to Startup



Opening a new project

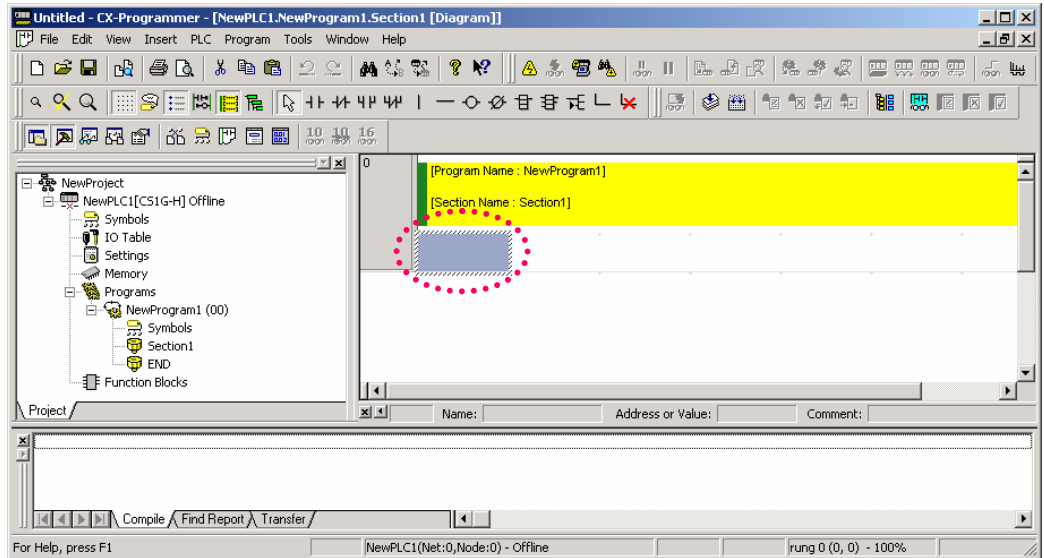


Device type settings



Creating a program

After checking the cursor position at the upper left of Ladder Window, start programming.



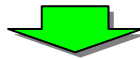
### 5-1. Entry of Normally Open Contact

C

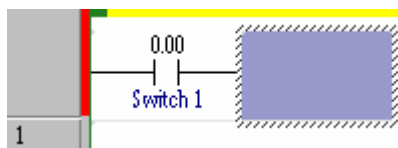
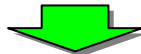
..... Press [C] from a keyboard to open the [New Contact] dialog.

0

0 of the upper digit of an address can be omitted.



Enter a symbol comment.



Deletion of instructions

- Move the cursor to the instruction and then press the DEL key.
- Move the cursor to the right cell of the instruction and press the BS key.

0 of the upper digit of an address is omitted when shown.

[.] (period) is displayed between a channel number and a relay number.

C

0

ENT

Switch 1

ENT

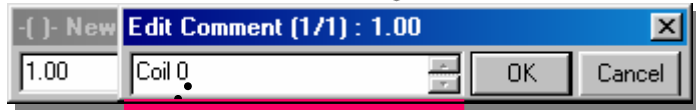
### 5-2. Entry of Coil

**O** ..... Press [O] from a keyboard to open the [New Coil] dialog.



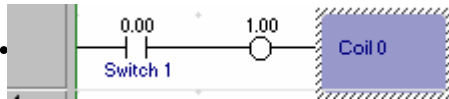
**100** ..... Press [100] from a keyboard to enter the address.

**ENT** ..... Press [ENT] from a keyboard to confirm the address.



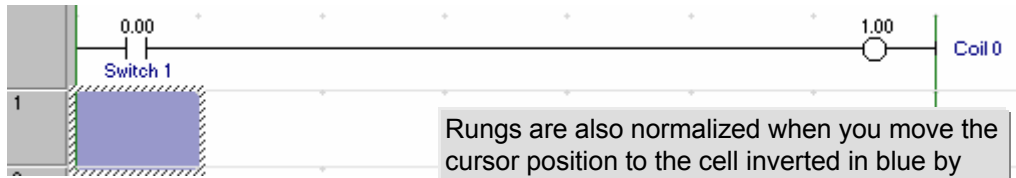
**Coil 0** ..... Press [Coil 0] from a keyboard to enter the comment.

**ENT** ..... Press [ENT] from a keyboard to confirm the comment.



Press [R] to normalize a rung.

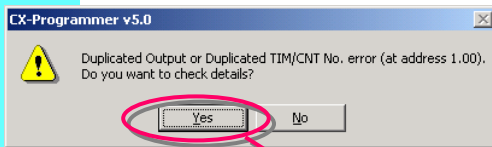
**R** ..... Press [R] from a keyboard to normalize the rung.



Rungs are also normalized when you move the cursor position to the cell inverted in blue by pressing the arrow keys from a keyboard or using a mouse.

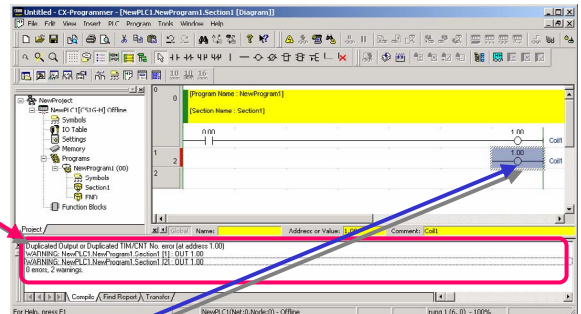
#### Useful Function: Automatic check of duplicated coils

If a duplicated coil is entered during program creation, the following message is displayed and you can notice that the coil is duplicated right away.



Output Window automatically opens.

Press the [ESC] key to close the open Output Window.



Double-click by using a mouse (or press F4). The cursor moves to the place of the applicable coil on Ladder Window.

Duplicated Output or Duplicated TIM/CNT No. error (at address 1.00)  
WARNING: NewPLC1.NewProgram1.Section1 [1]: OUT 1.00  
WARNING: NewPLC1.NewProgram1.Section1 [2]: OUT 1.00

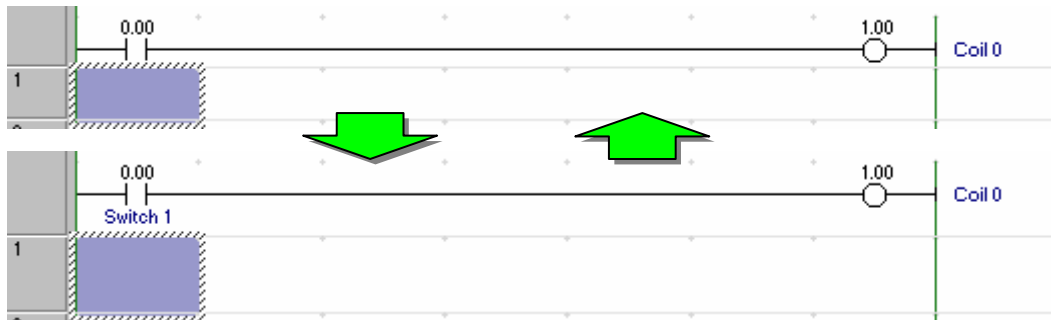
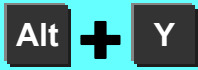
Double-click

The place of a duplicated coil in the program is displayed.



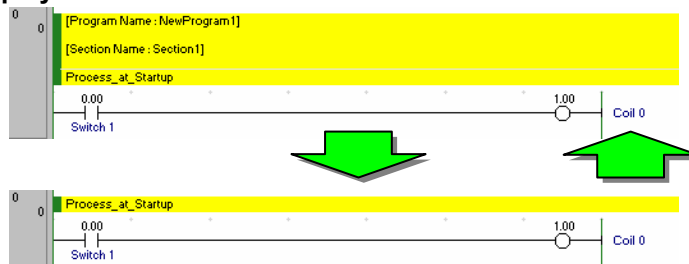
[Reference]

1. Press [Alt]+[Y]. You can switch showing/hiding of Symbol Comment.



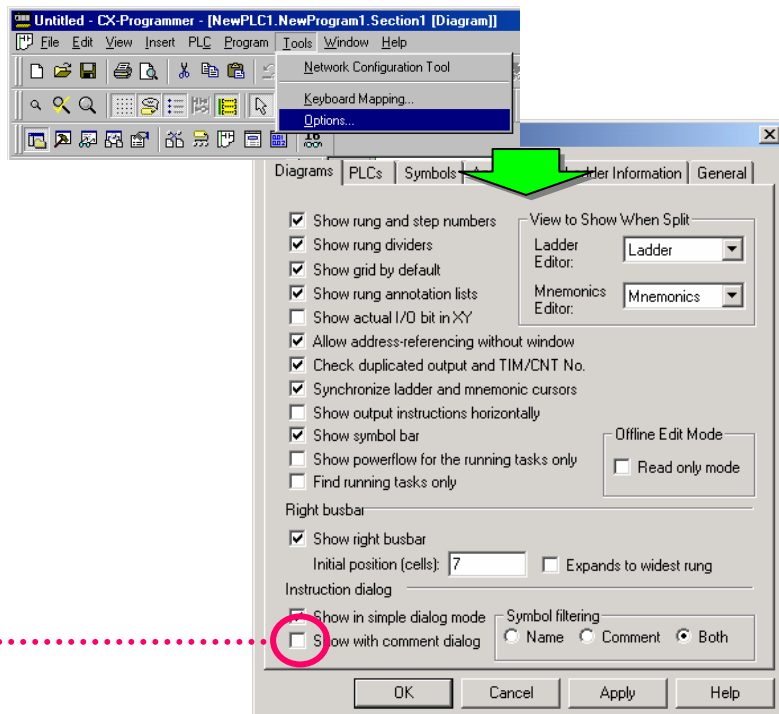
2. Click the toolbar button [Show Program/Section Comments] to switch the display of the comments shown in the head row.

Click



3. Select [Tools] | [Options] from the CX-Programmer menu. You can set hiding of the comment entry dialog.

[Tools] -> [Options]



Click the check box to remove the check mark.

The comment entry dialog is not displayed anymore.





Installation to Startup

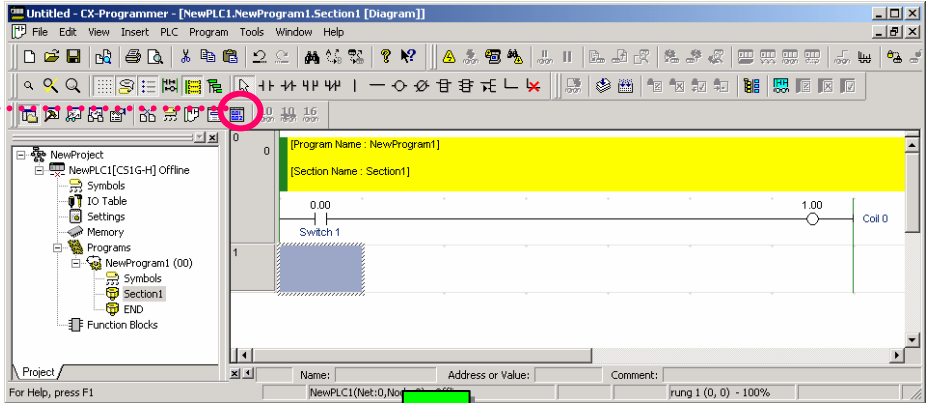
Opening a new project

Device type settings

Creating a program

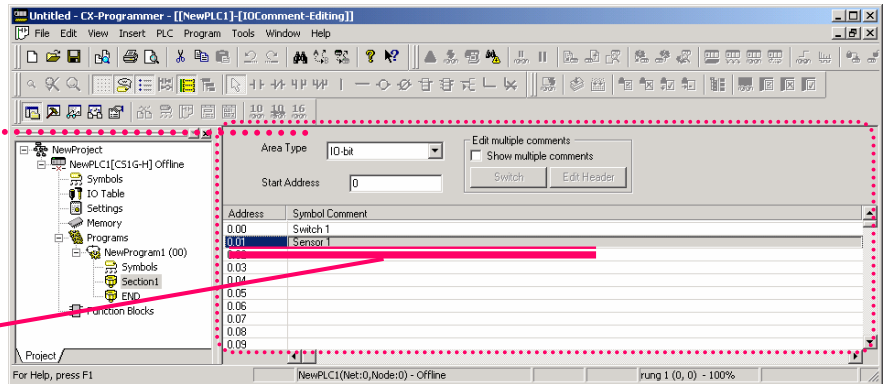
### 5-3. Edit of Symbol Comment

Click



Ladder Window is switched to the Symbol Comment Editing window.

Double-click the left mouse button on a bit number that you want to enter a symbol comment, and you will be able to enter a symbol comment.



Copy&Paste and deletion of one or more comments are possible by the cell.

Drag the mouse with the right mouse button pressed to invert the source bits of copy in blue.

Example of copying & pasting comments of two bits

Address	Symbol Comment
0.00	Switch 1
0.01	Sensor 1
0.02	
0.03	
0.04	
0.05	
0.06	
0.07	
0.08	
...	

Click the right mouse button on the bit number of the copy destination, and select [Paste].

Click the right mouse button on the range, and select [Copy] from the popup menu.

Address	Symbol Comment
0.00	Switch 1
0.01	Sensor 1
0.02	
0.03	
0.04	
0.05	
0.06	
0.07	
0.08	
0.09	
0.10	
0.11	

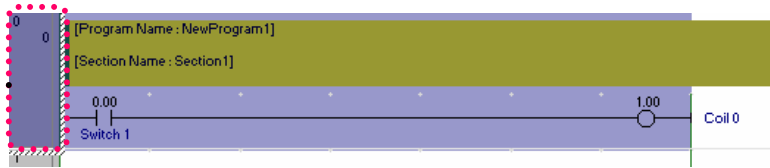
Copy&Paste of symbol comments is possible between Excel and CX-Programmer too.

Address	Symbol Comment
0.00	Switch 1
0.01	Sensor 1
0.02	
0.03	Switch 1
0.04	Sensor 1
0.05	

The comments of the selected two bits are copied.

### 5-4. Entry of Rung Comment

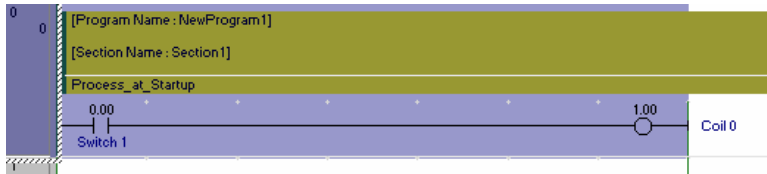
Move the cursor to this position. (The rung is inverted in blue.)



The entry screen shows up.

The 'Rung Properties' dialog box is shown with the 'General' tab selected. The 'Rung' field contains the number '0'. There is a 'Delete' button to the right of the field.

The 'Rung Properties' dialog box is shown with the 'General' tab selected. The 'Rung' field contains the number '0'. The 'Process\_at\_Startup' option is selected in the dropdown menu. There is a 'Delete' button to the right of the dropdown.



ENT

[Process\_at\_Startup] Enter a rung comment.

ENT

### 5-5. Entry of Normally Closed Contact

Press "/" from a keyboard to show the [New Closed Contact] dialog.

The 'New Closed Contact' dialog box is shown. The number '1' is entered in the field, which is circled in red. There are 'Detail >>', 'OK', and 'Cancel' buttons.

The 'Edit Comment (1/1) : 0.01' dialog box is shown. The text 'Sensor 1' is entered in the field. There are 'OK' and 'Cancel' buttons.



1

ENT

Sensor 1

ENT

Installation to Startup

Opening a new project

Device type settings

Creating a program



### 5-6. Entry of Attached Comments

This function is very useful for keeping change histories at maintenance and notes of debug bits at startup.

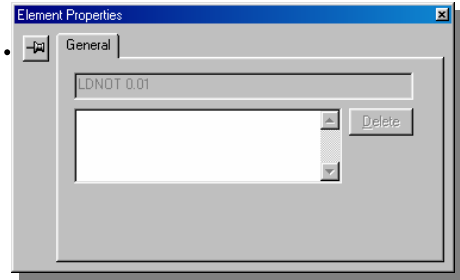


Move the cursor to the contact to which you want to write an annotation.

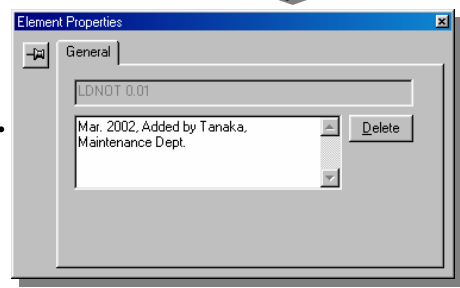
**Alt + ENT**

Or click the right mouse button.  
-> [Properties]

The entry screen shows up.

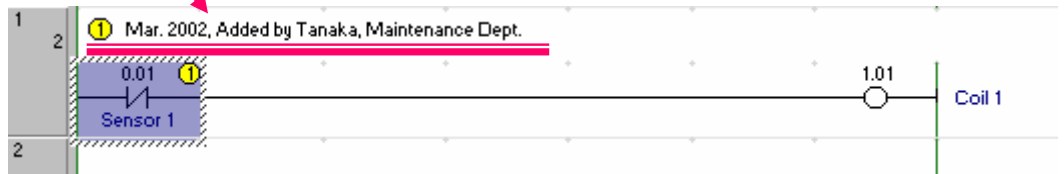


Enter [Mar. 2002 Added by Tanaka, Maintenance Dept.]



Press [Alt] + [A] to switch showing/hiding of attached comments.

**ENT**



### 5-7. Entry of Differential Contact...Up

**C**

100

Click **Detail >>**

Click [Up].

**ENT**

**ENT**

This entry method is available only for CS/CJ and CV series PLCs. For the other series PLCs, use DIFU (13).

### 5-8. Entry of Differential Contact...Down

**C**

101

Click **Detail >>**

Click [Down].

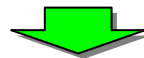
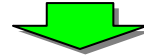
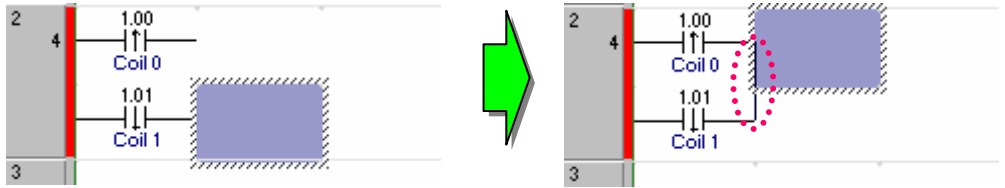
**ENT**

This entry method is available only for CS/CJ and CV series PLCs. For the other series PLCs, use DIFD (14).



### 5-9. Entry of Vertical...Up

Ctrl + ↑  
Or  
U



### 5-10. Entry of Vertical...Down



O 200  
ENT Coil 2

ENT R

C 200  
ENT ENT

O 300  
ENT Coil 3  
ENT

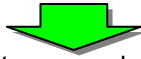
←

Ctrl + ↓  
Or  
V



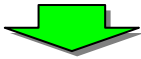
### 5-11. Entry of Advanced Instructions 1 - Entry of Strings

I ..... Show the [New Instruction] dialog.



Enter an instruction and its operand.

++\_ d0 > ENT

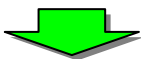


Enter a comment.

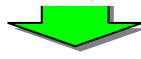
Products > ENT



See the next page for the contents of instructions.



R



Installation to Startup

Opening a new project

Device type settings

Creating a program

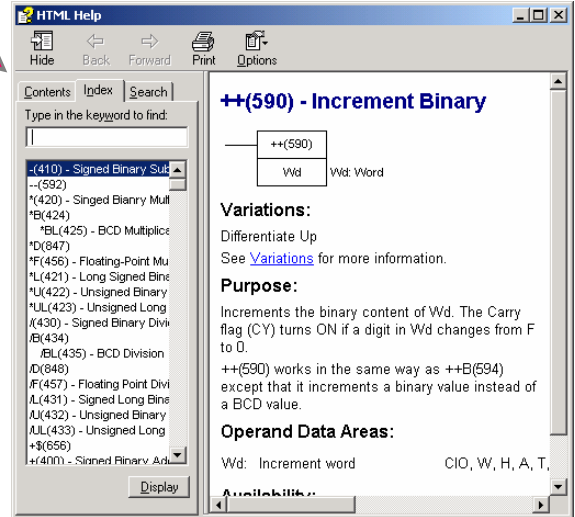
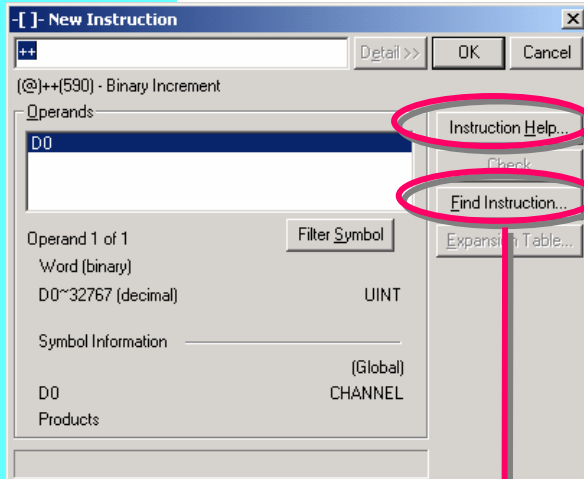
### 5-12. Entry of Advanced Instructions 1 - Useful Functions

Click **Detail >>**



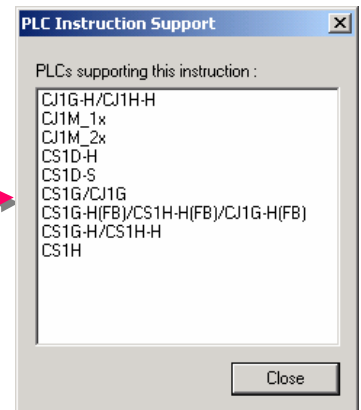
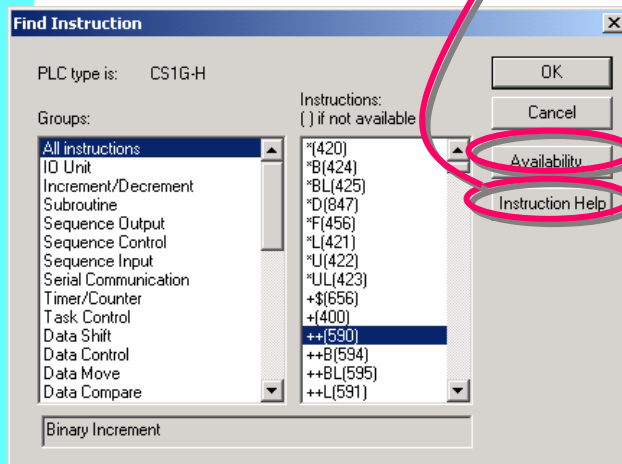
Instruction Help Function

Click **Instruction Help...**  
The reference guide screen of the instruction shows up.



Find Instruction Function

Click **Find Instruction...**  
The list of advanced instructions per function shows up.



PLCs supporting the applicable instruction are listed.

Installation to Startup



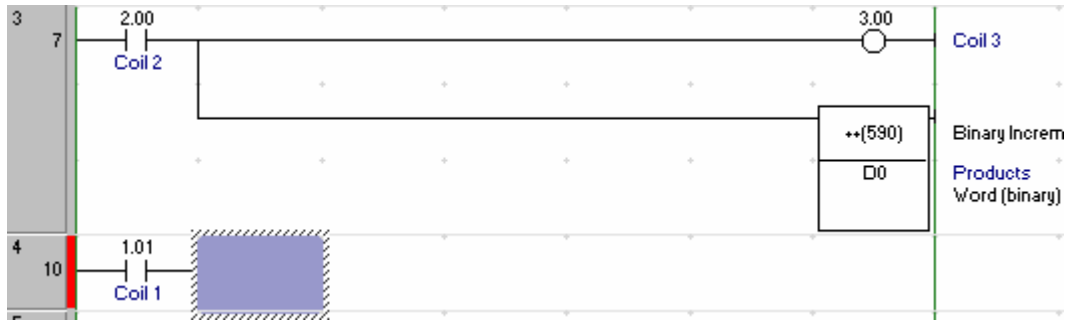
Opening a new project



Device type settings

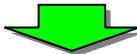


Creating a program



### 5-13. Entry of Auxiliary Relay - 1.0 Second Clock Pulse Bit

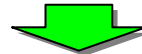
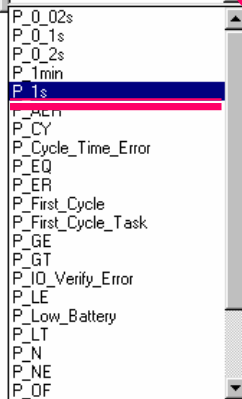
Show the [New Contact] dialog.



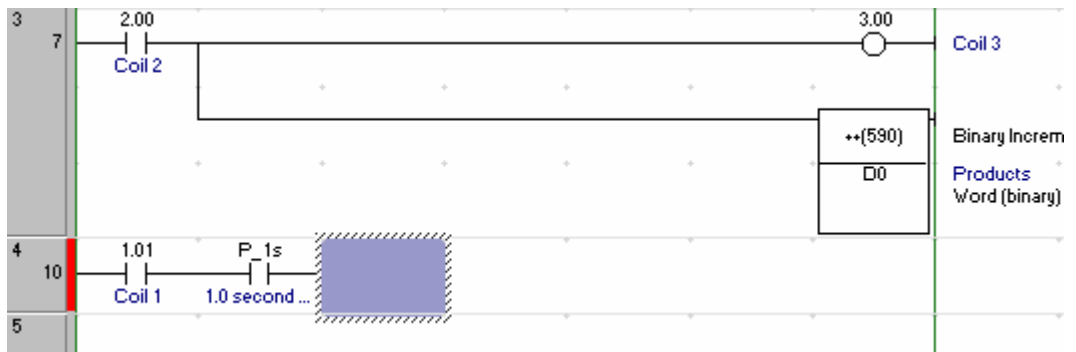
Click



Select [P\_1s] from the pull-down menu.



ENT







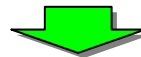
Refer to the former pages to execute coding.



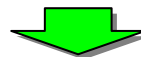
### 5-14. Entry of Advanced Instructions 2 - Entry of Differential Instructions

Differential Instructions...Instructions executed in only one scan when running a program.

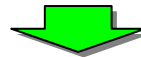
Show the [New Instruction] dialog.



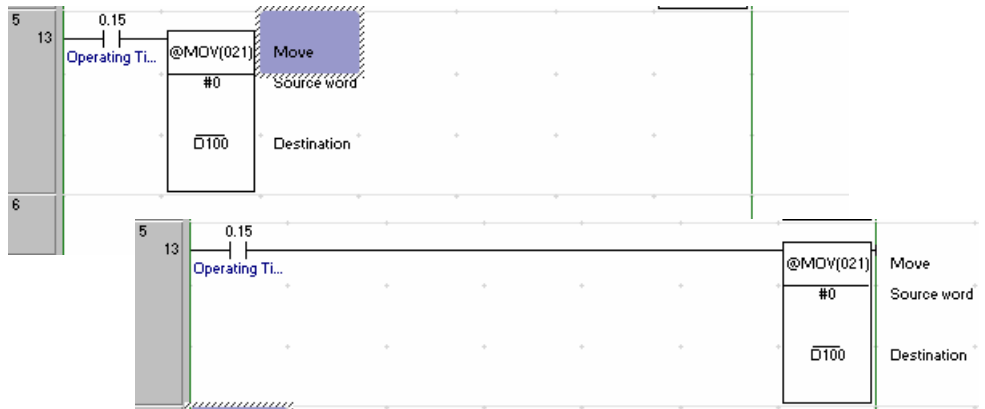
Enter  
**@MOV #0**  
**D100**



Enter a comment if necessary.



Attach @ (at mark) before instructions. It makes the instructions differential.

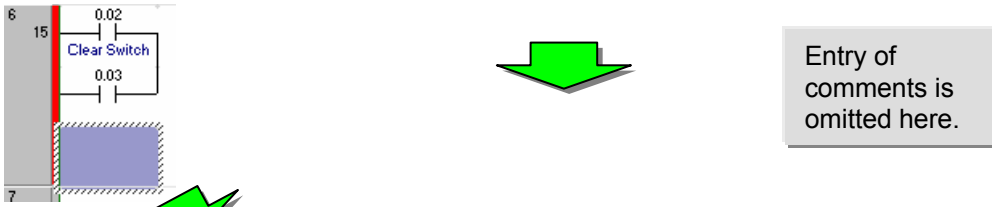




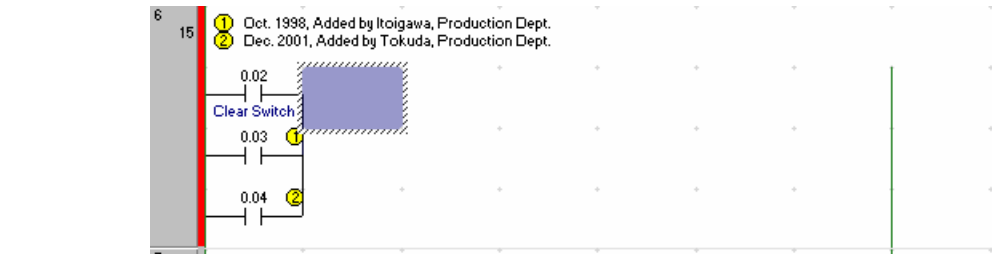
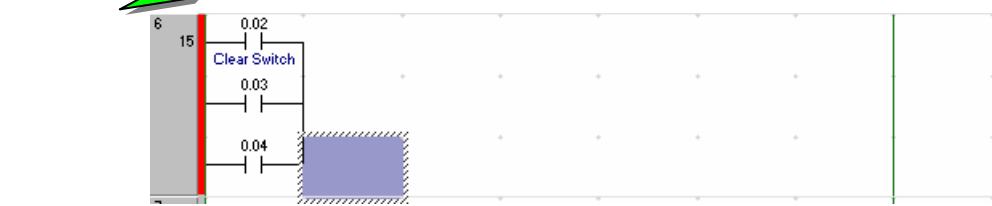
Refer to the former pages to execute coding.



### 5-15. Entry of OR Rung



Entry of comments is omitted here.



ENT

W 3

ENT ENT

ENT

W 4

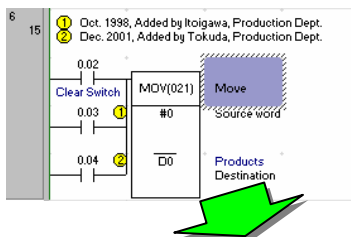
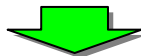
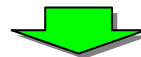
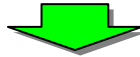
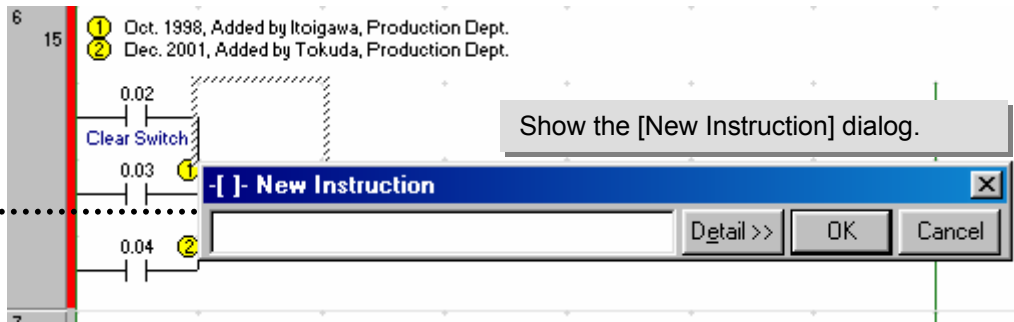
ENT ENT



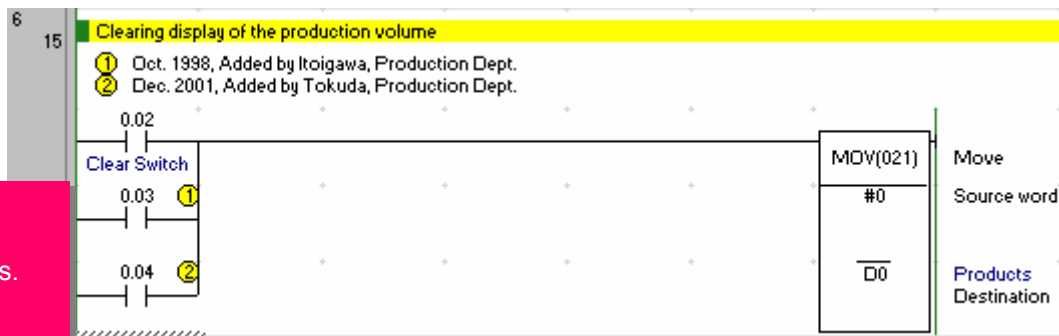
Refer to the section 5-6 to enter annotations.



### 5-16. Entry of Advanced Instructions 3 - Entry by Fun No.



Refer to the section 5-4 to enter a rung comment.



Note:  
 The Fun No. of MOV depends on PLC types.  
 CS-series -> 021  
 CJ-series -> 021  
 CV-series -> 030  
 C-series -> 21



021

The instruction corresponding to the entered Fun No. is displayed.

Enter #0 D0



ENT



R

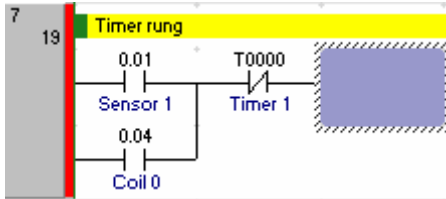
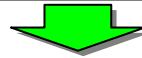


Refer to the former pages to enter rungs and comments.

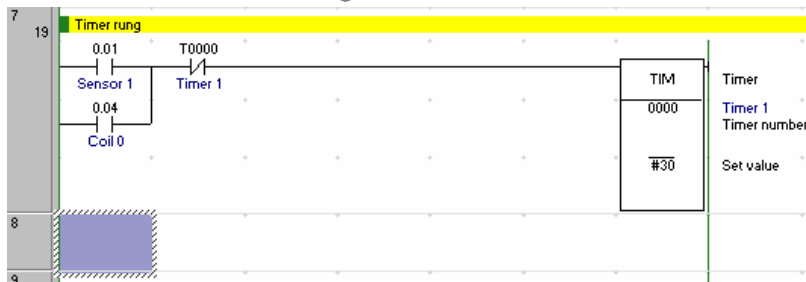
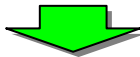
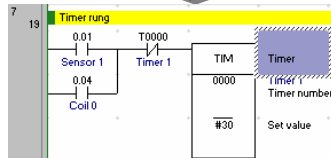


### 5-17. Entry of Timer Instructions

Entry of a Timer bit



Entry of a Timer instruction



**/** **T0** **ENT**

\*T0: Indicates TIM0.



Enter a comment.

**Timer 1** **ENT**

**I**

**TIM\_0\_#30**



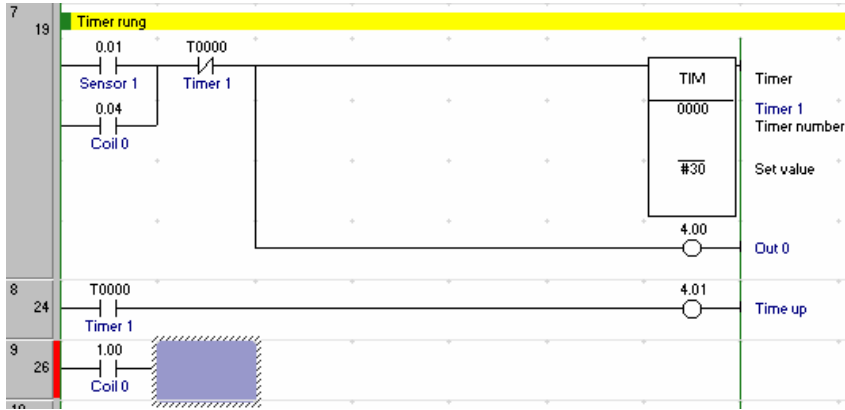
**ENT**



**R**

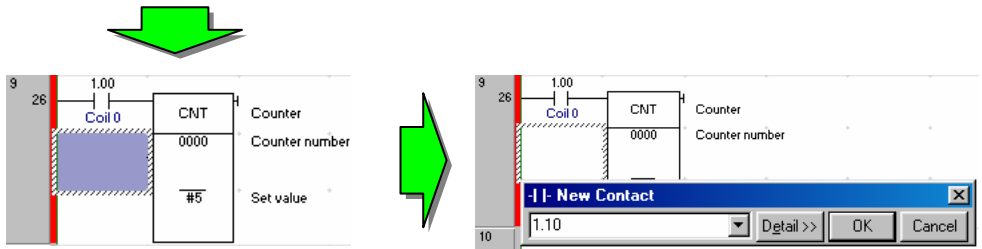
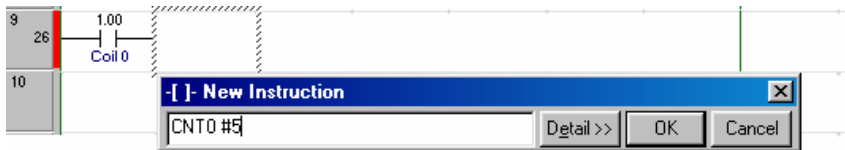


Refer to the former pages to execute coding.

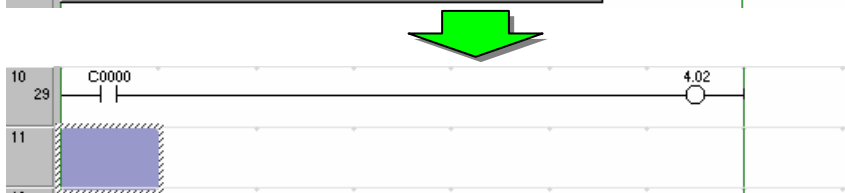


### 5-18. Entry of Counter Instructions

Entry of a Counter instruction



Entry of a Counter bit



CNT\_0\_#5



ENT

Move the cursor by using arrow keys or a mouse.  
Enter a bit for reset.



R



C C0 ENT

ENT

O 402 ENT

ENT



R



Move the cursor to this position. The rung is inverted as shown right.

### 5-19. Edit of Rungs ...Copy & Paste

Refer to the former sections to enter a rung.

**Ctrl + C**  
(Copy a rung)

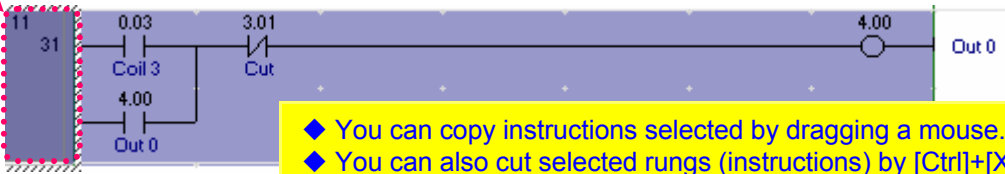


Press the ↓ key to move the cursor to this position.

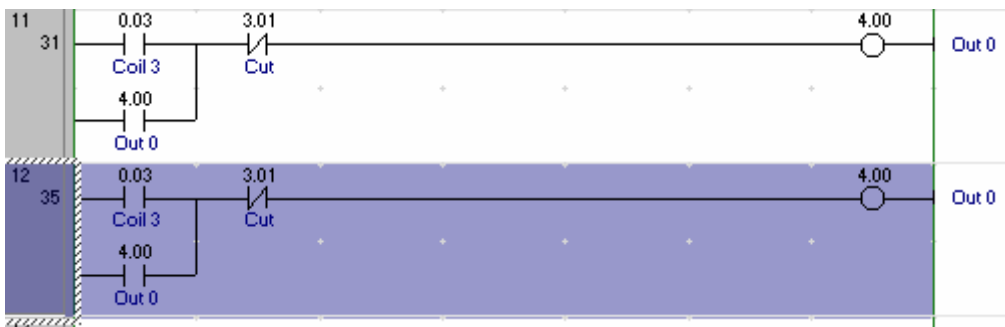
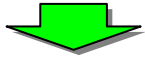
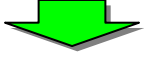


**Ctrl + V**  
(Paste a copied rung)

Click each instruction and then change the bit numbers.



- ◆ You can copy instructions selected by dragging a mouse.
- ◆ You can also cut selected rungs (instructions) by [Ctrl]+[X].



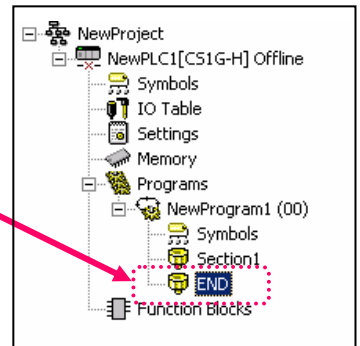
- ◆ When making a mistake, press or [Ctrl+Z] for Undo (return to the previous operation)
- press or [Ctrl+Y] for Redo (go to the next operation)

### 5-20. Entry of END Instruction

At the creation of a new project, a section of the END instruction only is automatically generated. You do not need to enter an END instruction.

**Note:**

The END section is not generated when you load a program created with CX-Programmer V2 or the former versions.



**Chapter 2**  
**Online / Debug**

**CX-Programmer**

Online to Transfer



Monitoring



Force On Force Off



Program Check

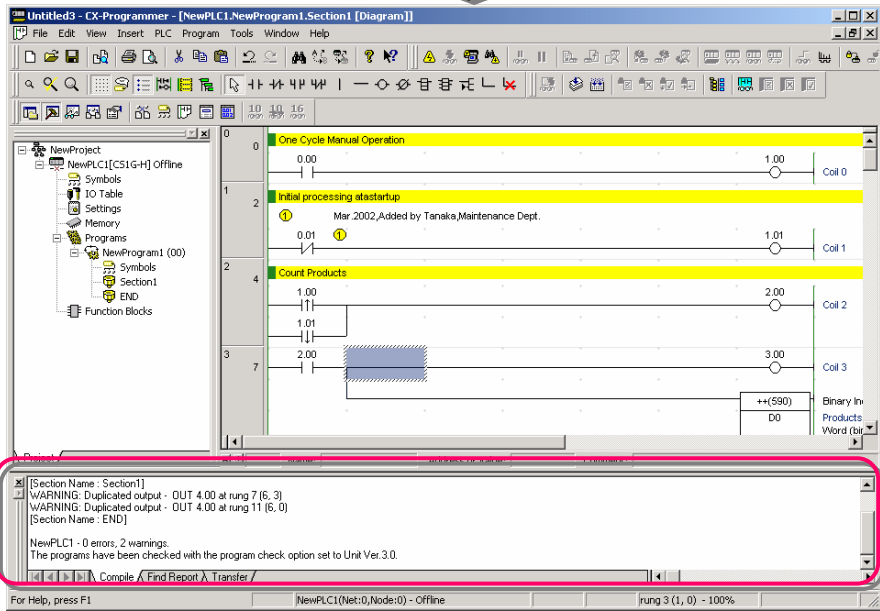
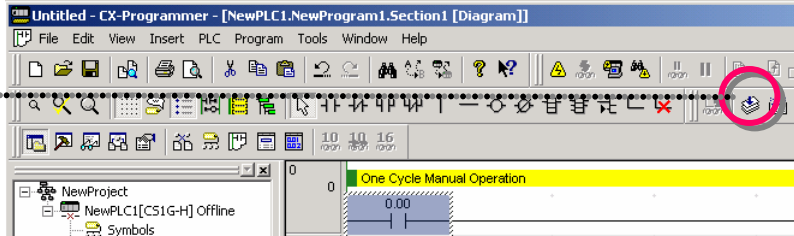


Online Edit

# 1. Program Error Check (Compile)

Before program transfer, check errors.

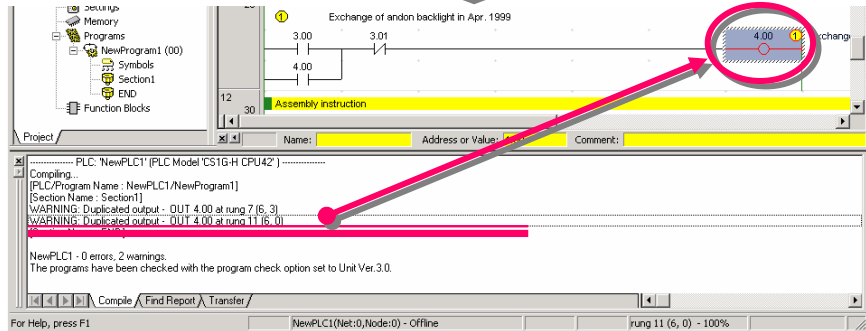
Click



Errors and addresses are displayed on Output Window.



Double-click a displayed error, and the cursor in Ladder Diagram will go to the corresponding error location and the error rung will be shown in red.



Modify the error.

- Output Window automatically opens at program check.
- The cursor moves to an error location by pressing J or F4 key.
- Output Window closes by pressing the ESC key.



Online to Transfer



Monitoring



Force On Force Off



Program Check



Online Edit

## 2. Going Online

CX-Programmer provides three kinds of connecting methods depending on usage.



Normal online. Enables you to go online with a PLC of the device type and method specified when opening a project.

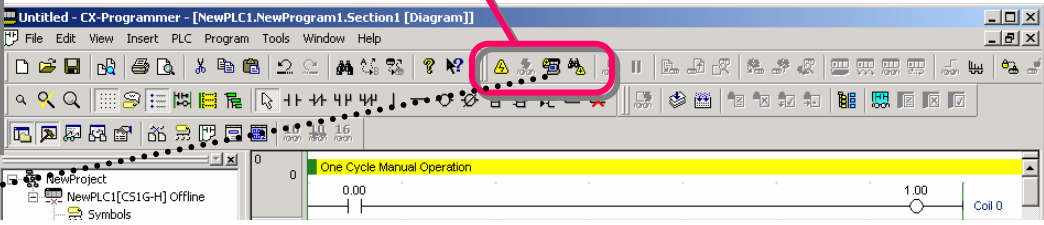


Auto online. Automatically recognizes the connected PLC and enables you to go online with a PLC with one button. -> Uploads all data such as programs from the PLC.



Online with Simulator. Enables you to go online with CX-Simulator with one button (You need to install CX-Simulator.)

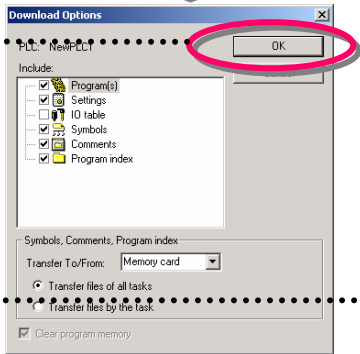
This time, online/debug functions when working online with CX-Simulator are explained in this guide (Install CX-Simulator separately).



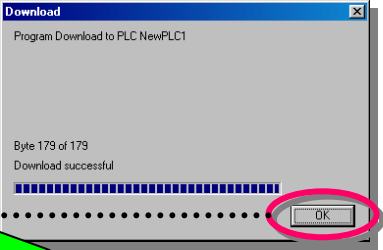
Click



Click [OK].

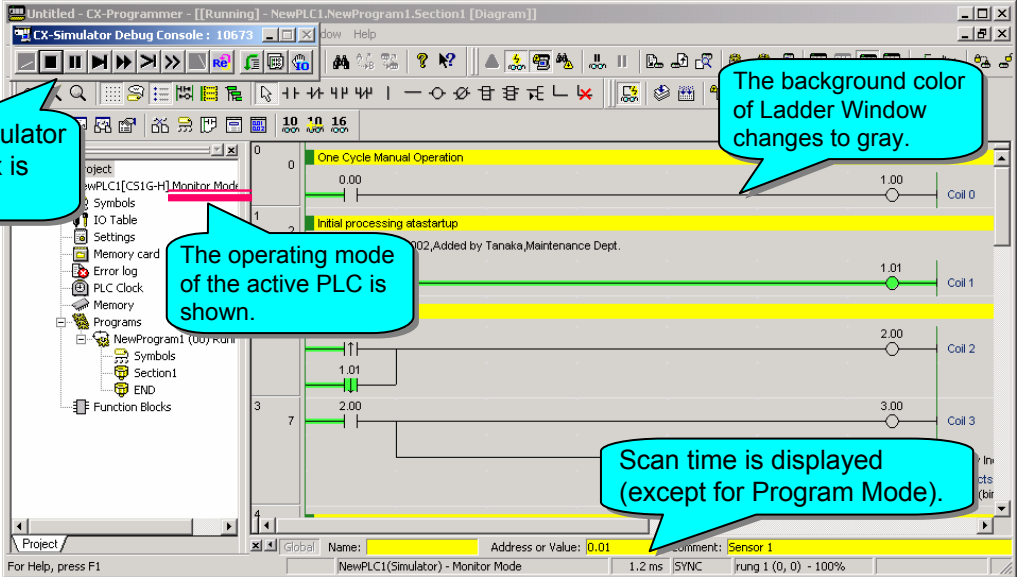


Program transfer starts.



Click [OK].

The CX-Simulator Console box is shown.



The operating mode of the active PLC is shown.

The background color of Ladder Window changes to gray.

Scan time is displayed (except for Program Mode).

Online Transfer



Monitoring



Force On Force Off



Program Check



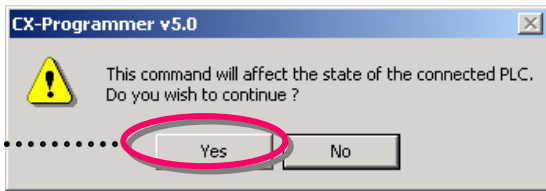
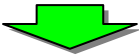
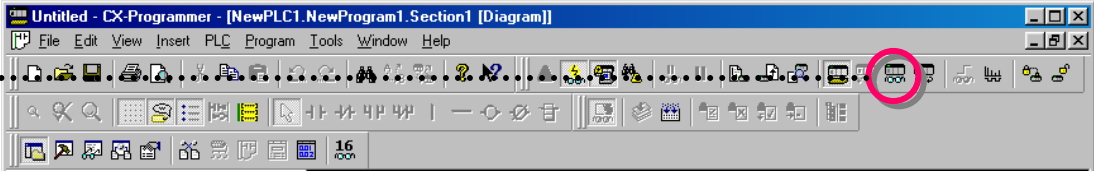
Online Edit

### 3. Monitoring

Change the PLC (simulator) to Monitor Mode.

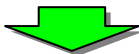
The on/off statuses of contacts and coils are monitored.

Click

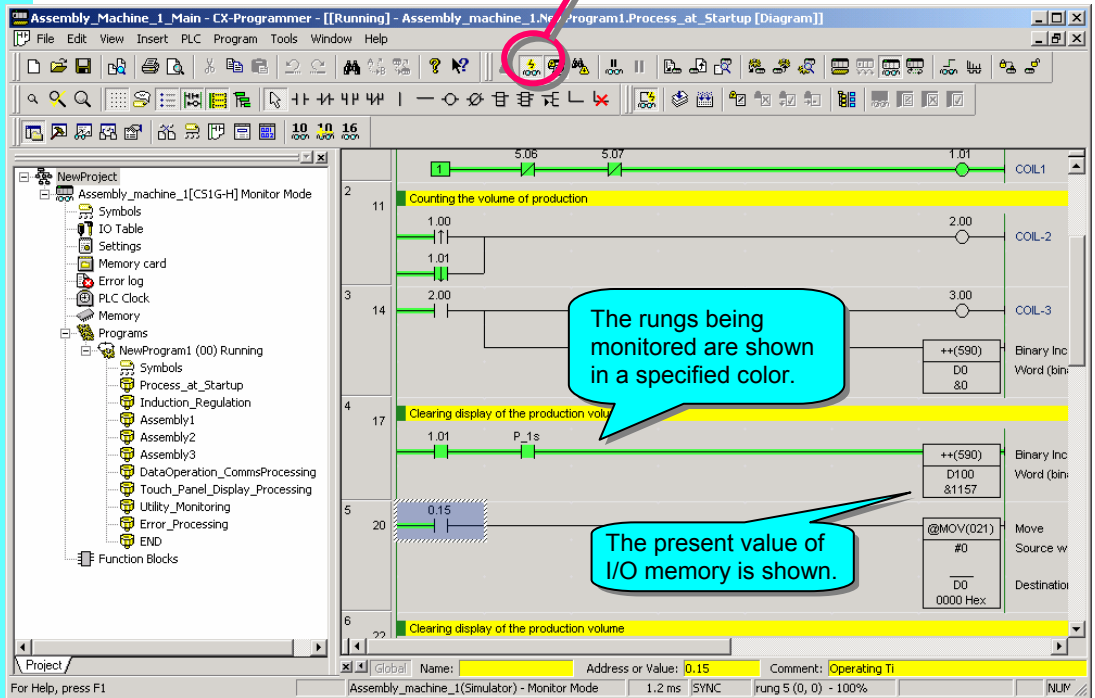


If your program has a large volume of data, the scroll speed of the screen may become slow when monitoring. In that case, click the below icon to cancel monitoring once, scroll the screen to the address you want to monitor, and then change to monitoring mode again.

Click [Yes].



toggles on/off of PLC monitoring.



Online to Transfer



Monitoring



Force On Force Off



Program Check

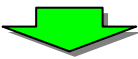
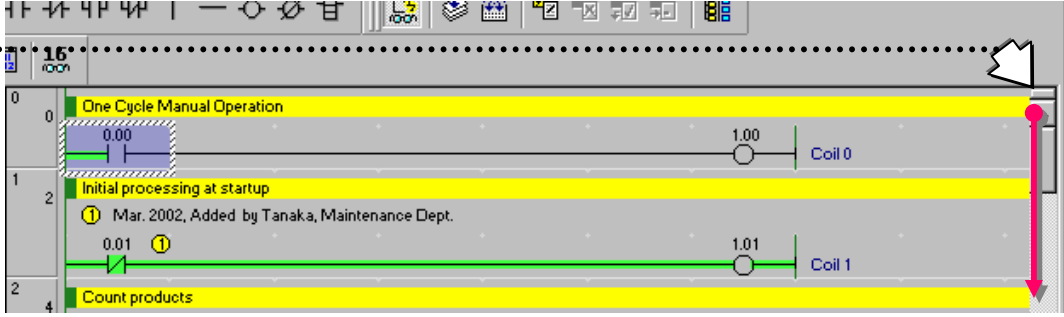


Online Edit

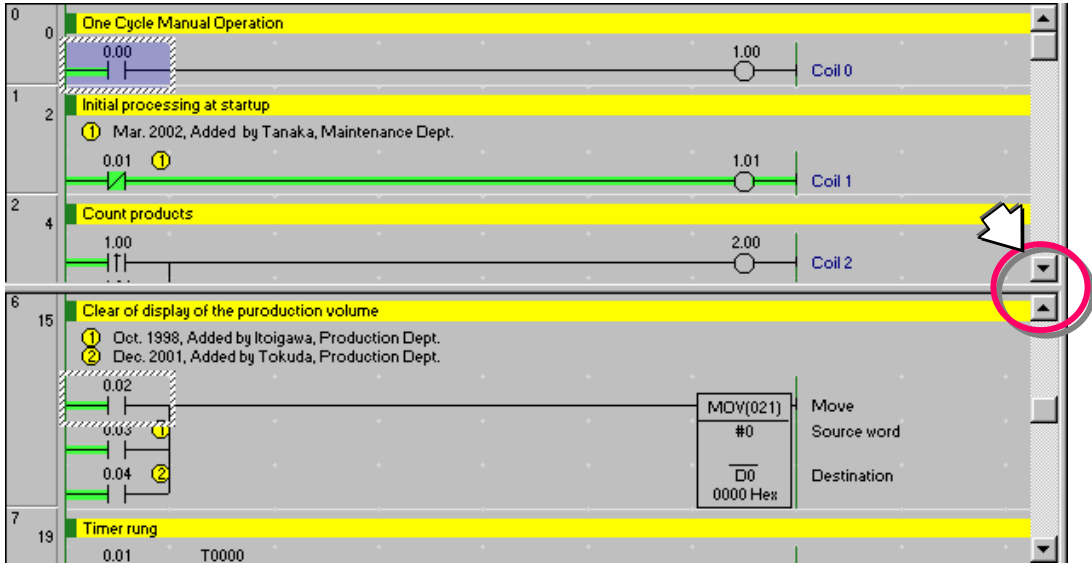
### 4. Monitoring - 2 Monitoring Many Locations in Program at Once

You can split Ladder Window and monitor more than one location in a program at once.

Move the mouse pointer to the arrow position shown in the right figure and drag the cursor down with the left mouse button pressed.

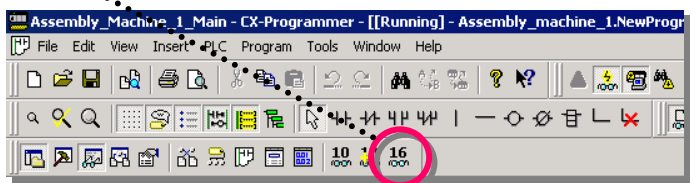


The screen is divided into two panes up and down, and you can display any address in two panes respectively by using the scroll bars.

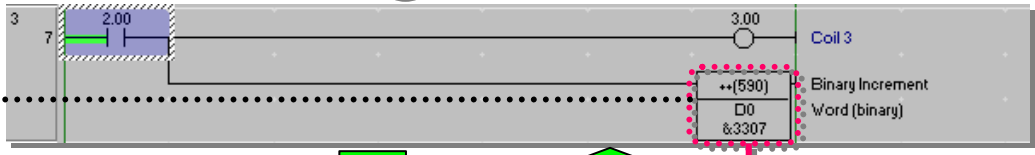


### 5. Monitoring - 3 Monitoring in Hex

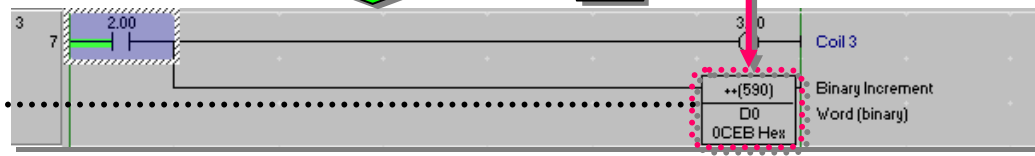
Click to switch the display format of the present value of IO memory between decimal and hexadecimal.



Shown in decimal



Shown in hex



Online Transfer



Monitoring



Force On Force Off



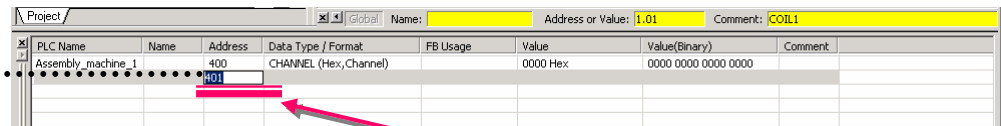
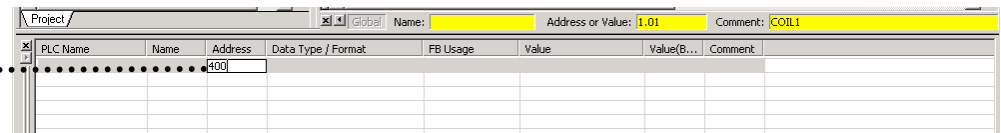
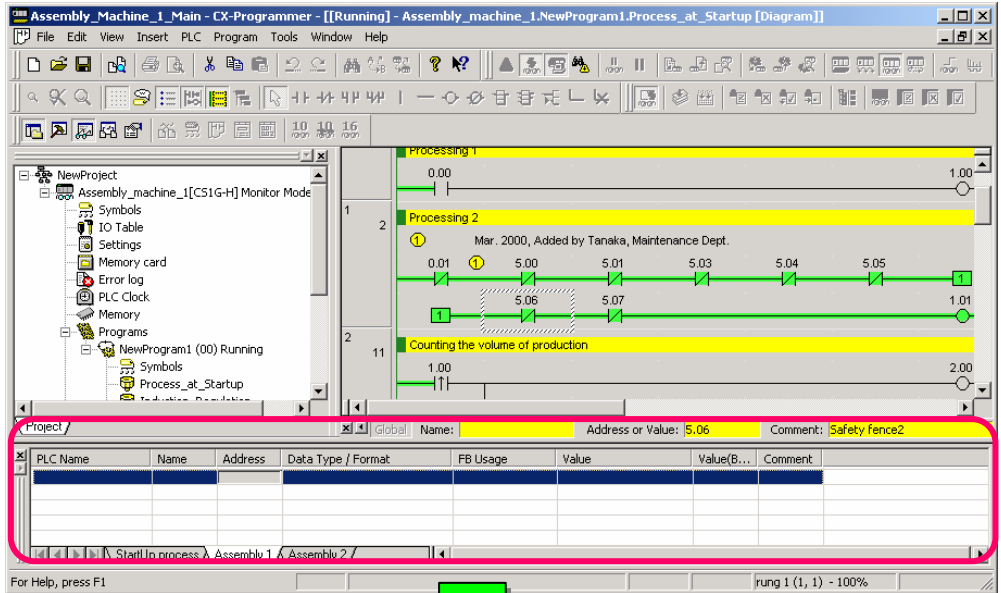
Program Check



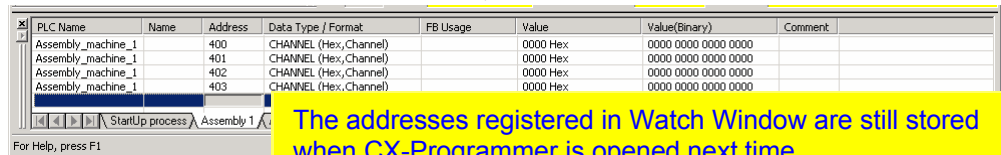
Online Edit

## 6. Monitoring - 4 Watch Window

I/O monitoring of the addresses specified in Watch Window is executed.



You can also enter a given address in this status.



The addresses registered in Watch Window are still stored when CX-Programmer is opened next time.

Display Watch Window.

Alt + 3

Enter a bit number that you want to monitor.

400

ENT

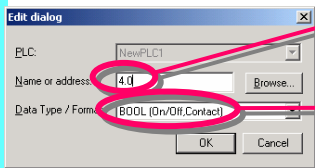
Press the ENT key..... continuously for auto increment of addresses.

ENT  
ENT  
ENT

Entry of BOOL type (contact)

Example: Entry of 4CH 00Bit

Enter "." (period) between CH and Bit.



Or enter "400" without a period in the "Name or address" box and then specify "BOOL" in the "Data Type/Format" box (Reverse the box and then press B key form the keyboard.)

Online to Transfer



Monitoring



Force On Force Off



Program Check



Online Edit

## 7. Monitoring - 5 Present Value Change and Binary Monitoring in Watch Window

The present values of bits and words are changed in Watch Window.

In Watch Window, binary monitoring is possible for the data that can be treated by the word.

Double-click the mouse. ....

PLC Name	Name	Address	Data Type / Format	FB Usage	Value	Value(B...	Comment
Assembly_machine_1		D0	CHANNEL (Hex, Channel)		0002 Hex	0000 0...	
Assembly_machine_1			CHANNEL (Hex, Channel)		BBE7 Hex	1011 1...	
Assembly_machine_1		4	CHANNEL (Hex, Channel)		0000 Hex	0000 0...	



An entry dialog opens. ....

**Set New Value**

Address: 4

Value: &#x60523

New Value:

0 to 65535, #0 to #FFFF

Buttons: Set Value, Close, Edit Address/Type, Binary >>



Enter a new value that you want to change to. ....

**Set New Value**

Address: 4

Value: &#x60523

New Value: 56569

0 to 65535

Buttons: Set Value, Close, Edit Address/Type, Binary >>

Click



4-word data is displayed in the binary system. ....

**Set New Value**

Address: 4

Value: &#x60523

New Value: 56569

0 to 65535

Address: Value: 15 14 13 12 11 10 9 8 7 6 5 4 3 2 1 0

4 EC6B HEX [Green] [Green] [Green] [Green] [White] [White] [White] [White] [White] [White] [White] [White] [White] [White] [White] [White]

Buttons: Set Value, Close, Edit Address/Type, << Hide Binary



As shown in the guidance at the bottom of the dialog, Force On/Off and Set On/Off are enabled also by key operation.

**Set New Value**

Address: 4

Value: &#x60523

New Value: 56569

0 to 65535

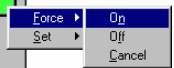
Address: Value: 15 14 13 12 11 10 9 8 7 6 5 4 3 2 1 0

4 EC6B HEX [Green] [Green] [Green] [Green] [White] [White] [White] [White] [White] [White] [White] [White] [White] [White] [White]

Buttons: Set Value, Close, Edit Address/Type, << Hide Binary

Cursorkey: Move TAB: Value T: ChangeOrder J: InvertBit  
Ctrl+J: ForceOn Ctrl+K: ForceOff Ctrl+L: Clear

Click the right mouse button on a bit, and you will be able to select Force On/Off and Set On/Off from the popup menu.

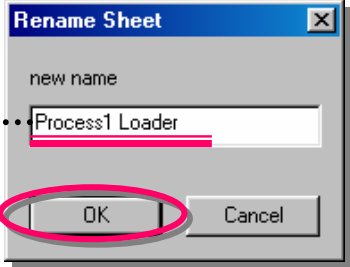
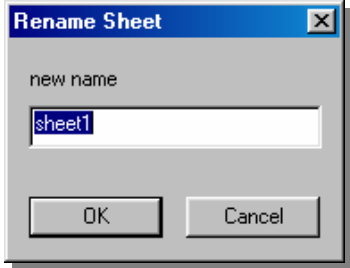
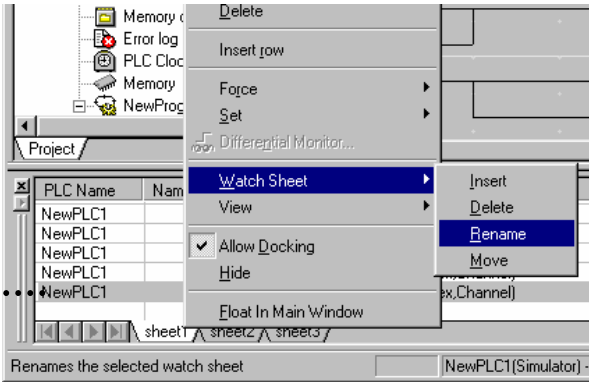




### 8. Useful Functions of Watch Window

Watch Window has a function that classifies and displays data in sheets like MS-EXCEL and names each sheet given names. This function is useful for debug or startup if you gather and manage the bits and words you want to check as one block in one sheet.

Click the right button of a mouse on Sheet1, and then select [Watch Sheet] -> [Rename].



To add a sheet, select [Watch sheet] -> [Insert].

Enter a name.  
Click [OK].

PLC Name	Name	Address	Data Type / Format	FB Usage	Value	Value(Binary)	Comment
Assembly_machine_1		400	CHANNEL (Hex, Channel)		0000 Hex	0000 0000 0000 0000	
Assembly_machine_1		401	CHANNEL (Hex, Channel)		0000 Hex	0000 0000 0000 0000	
Assembly_machine_1		402	CHANNEL (Hex, Channel)		0000 Hex	0000 0000 0000 0000	
Assembly_machine_1		403	CHANNEL (Hex, Channel)		0000 Hex	0000 0000 0000 0000	

It is useful to manage data if you name sheets by the phase or assembly.

Right-click on Watch Window. -> Select [View] from the popup menu. And then you will be able to choose showing/hiding of each item on Watch Window.

The names set by this operation are all saved when the project is saved (extension: .opt). Therefore, they are loaded as well as data such as ladder programs when the project is loaded next time.

Online to Transfer

Monitoring

Force On Force Off

Program Check

Online Edit

## 9. Monitoring - 6 Watch Window - 2

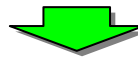
Move the mouse cursor to this position.

Drag & Drop from Ladder Diagram enables you to add an address to be monitored.

The screenshot shows the 'Assembly\_machine\_1\_Main - CX-Programmer' interface. The main window displays a ladder diagram with two rungs. Rung 2, labeled 'Processing 2', contains a sequence of normally open and normally closed contacts with addresses 0.01, 5.00, 5.01, 5.03, 5.04, 5.05, 5.06, 5.07, and 1.01, leading to a coil labeled 'COIL1'. Rung 11, labeled 'Counting the volume of production', contains a coil labeled 'COIL-2'. Below the ladder diagram is a 'Watch Window' table with the following data:

PLC Name	Name	Address	Data Type / Format	FB Usage	Value	Value(B...	Comment
Assembly_machine_1					0	0000 0...	

Drag and drop on Watch Window.



The screenshot shows the same PLC monitoring software interface, but the 'Watch Window' table is updated with data from the ladder diagram. The table now contains the following data:

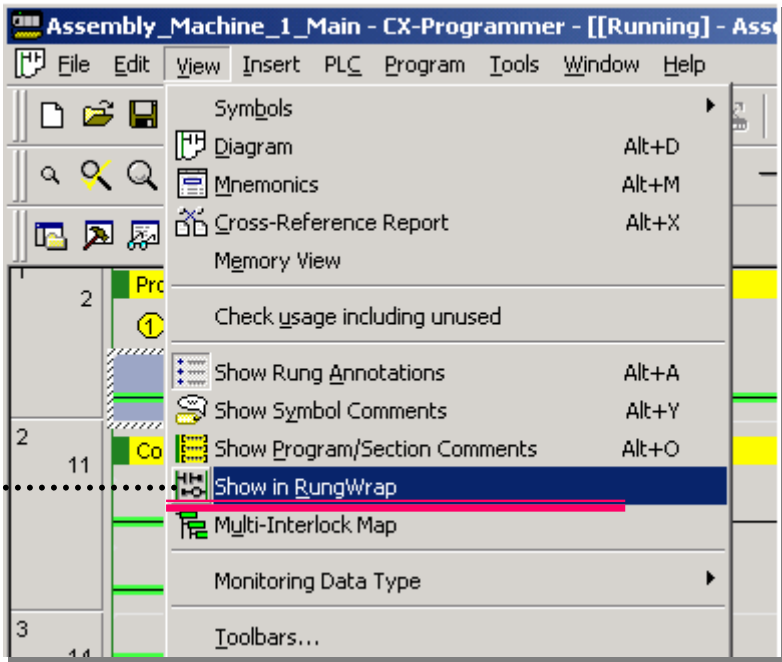
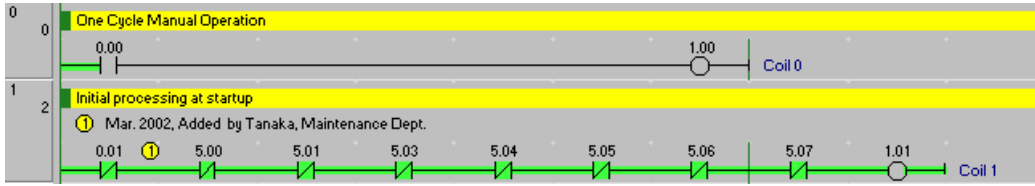
PLC Name	Name	Address	Data Type / Format	FB Usage	Value	Value(B...	Comment
Assembly_machine_1		0.01	BOOL (On/Off, Contact)		0		SENSOR-1
Assembly_machine_1		5.04	BOOL (On/Off, Contact)		0		Compr...
Assembly_machine_1		5.05	BOOL (On/Off, Contact)		0		Safety ...
Assembly_machine_1		5.06	BOOL (On/Off, Contact)		0		Safety ...
Assembly_machine_1		5.07	BOOL (On/Off, Contact)		0		Safety ...
Assembly_machine_1		1.01	BOOL (On/Off, Contact)		1		COIL1

Data such as rungs, bits per block, or operands of advanced instructions is pasted on Watch Window. Moreover, the on/off statuses of the bits and the present values of words are displayed.

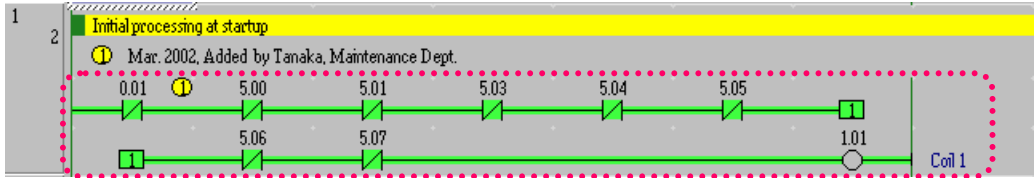
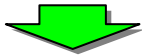


### 10. Monitoring - 7 Rung-wrap of Long Rung on Display

This function makes a rung longer than the right bus bar as shown in the below figure wrap when displayed.



Select [View] -> [Show in RungWrap].



The rung is wrapped at the right bus bar.

Once set, this function is always active until released by taking the reverse procedure of the above one.



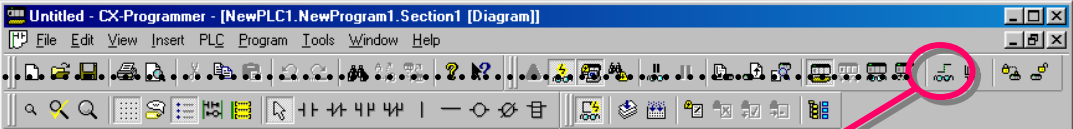
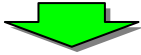


# 11. Monitoring - 8 Differential Monitor

The function detects differential up/down of a specified bit and indicates that differential conditions are satisfied by sound or display. The function eliminates the use of a trap rung for checking operation and improves the efficiency of programming and debug operations.



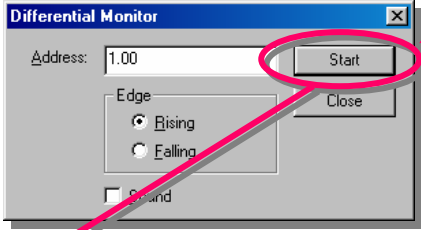
Move the cursor to a bit to be monitored.



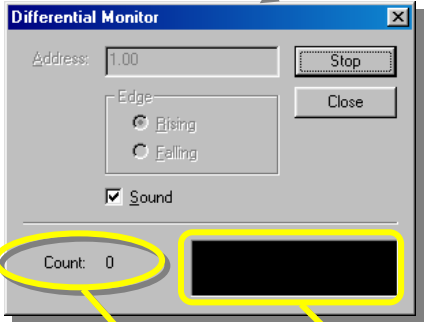
Click



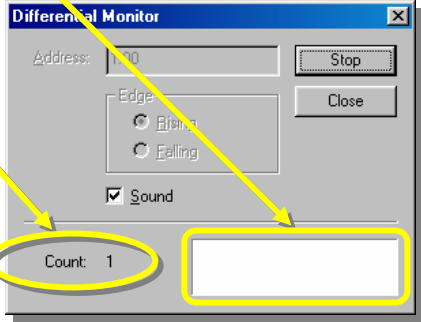
Or click the right mouse button on the applicable bit and select [Differential Monitor] from the popup menu.



Click [Start].



The count number is displayed on the dialog every time the differential condition (differential up in this example) is satisfied and the color of the box changes each time.



Online Transfer



Monitoring



Force On Force Off



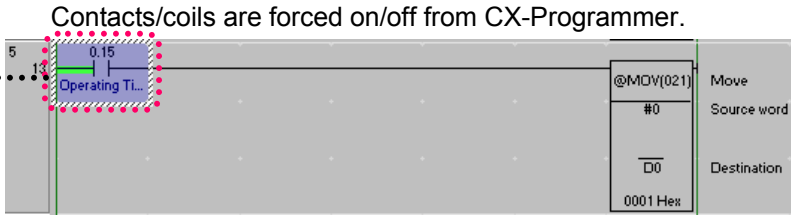
Program Check



Online Edit

### 12. Force On/Off

Move the cursor to a contact or coil that you want to force on/off.



Click the right mouse button. -> [Force] -> [On]



Force Off/Cancel of bits/coils are enabled in the same way.

Once bits/coils are forced on/off, the forced statuses are held until cancelled or the reverse procedures of on/off are taken. The statuses do not change by an external input or the operational result of the program. Moreover, force operations are not enabled when the PLC is in the Run mode.

Shortcut Key  
Ctrl+J: Force On  
Ctrl+K: Force Off

### 13. Displaying List of Forced-on/off Bits

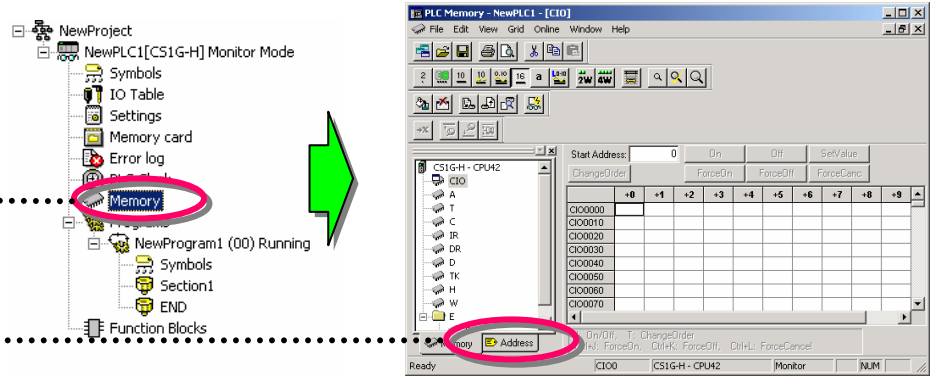
The bits forced on/off can be listed in a table. This function enables you to check the forced statuses of more than one bit at a glance.

Display Project Workspace.  
[Alt] + 1

Double-click [Memory].

Click the [Address] tab.

Double-click [Forced Status].



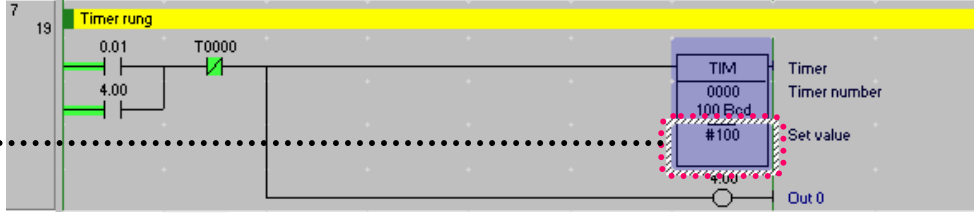
Address	Value	Attribute
CIO0.0	ON	Forced
CIO0.1	ON	Forced
CIO0.2	ON	Forced
CIO0.15	ON	Forced
C0.0	ON	Forced



### 14. Changing Set Value of Timer

The set value of a timer is changed while CPU is running (in the Monitor mode only).

Move the cursor to the set value of a timer.

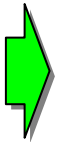


Enter the new set value #100.

**ENT**

Or double-click.

Dialog box 'Set Timer/Counter Value' showing the value #100 entered in the 'Value or address' field.



Dialog box 'Set Timer/Counter Value' with the OK button highlighted by a red circle.

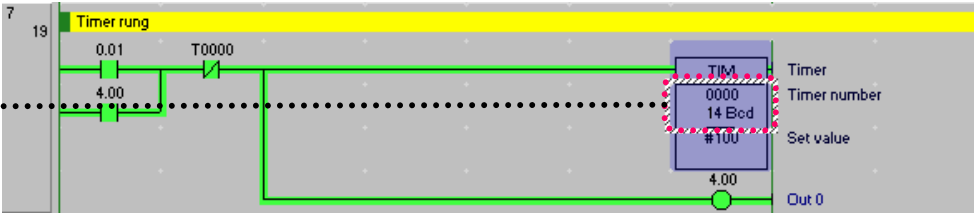
Click [OK] to complete.



### 15. Changing Present Value of Timer

The present value of a timer is changed while CPU is running (in the Monitor mode only).

Move the cursor to the present value of a timer.



Enter a new present value 5000.

**ENT**

Or double-click.

Dialog box 'Set New Value' showing the value 5000 entered in the 'Value' field.



Dialog box 'Set New Value' with the Set button highlighted by a red circle.

Click [Set] to complete.



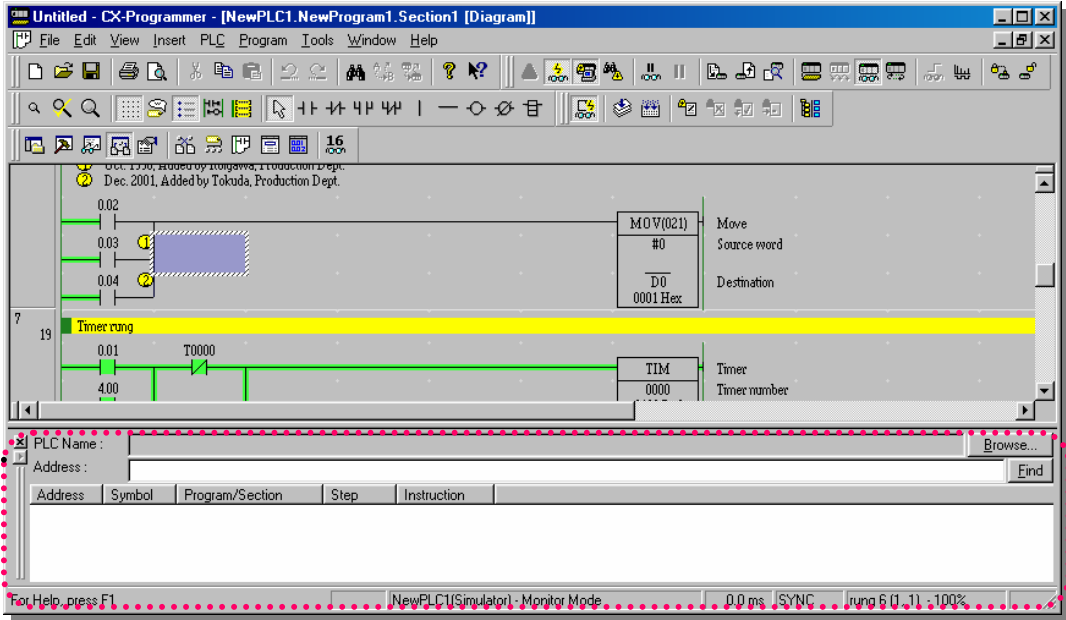
Subtraction starts from the new value 5000.



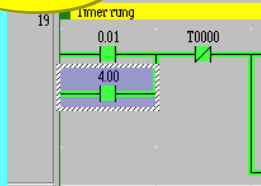
### 16. Find Function - 1 Find from Address Reference Tool

Display Address Reference Tool.

Alt + 4

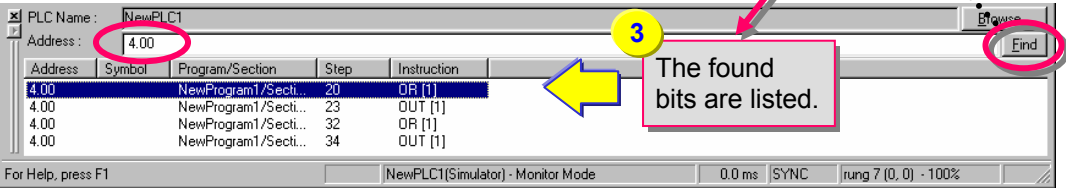


Reference



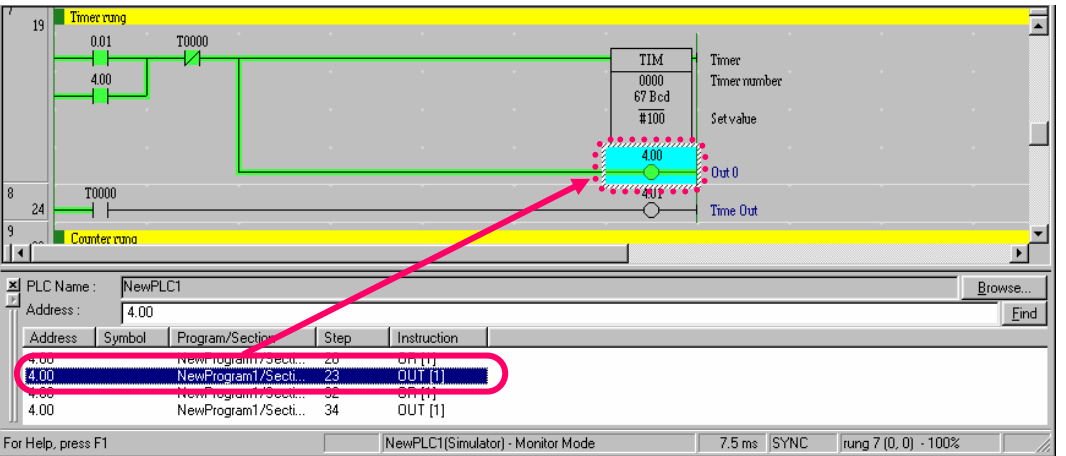
1 Enter a bit number that you want to find in the [Address] field.

2 Click Find



3 The found bits are listed.

You can also move the cursor to a bit that you want to find.



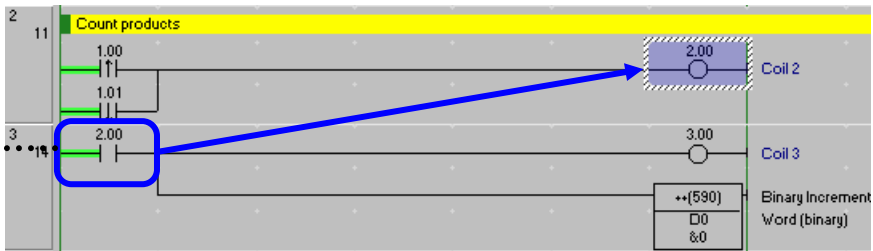
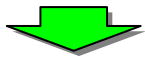
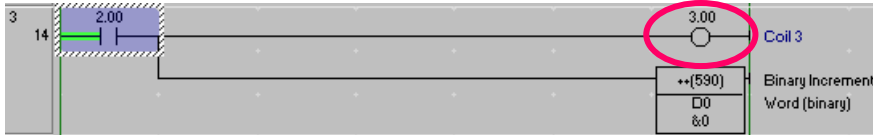
Click a bit that you want to find, and the focus will move to the corresponding position in the rung.



### 17. Find Function - 2 Retrace Find of Ladders

The function retraces ladder rungs so that you can find the causes of the coils not turned on.

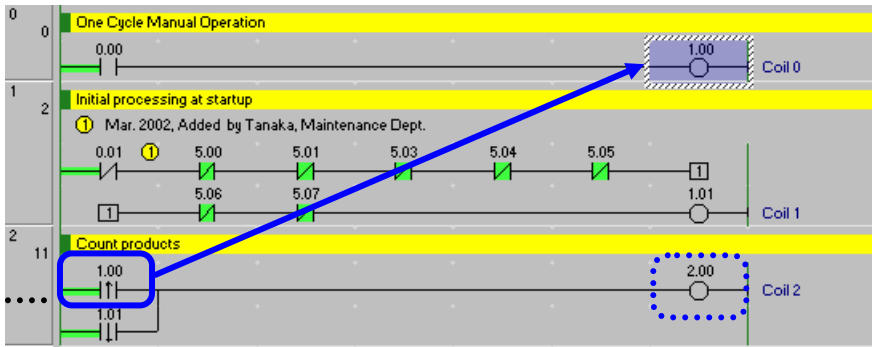
- (1) The reason why the coil 3.00 is not turned on is that its contact 2.00 is not turned on. Therefore, the function retraces rungs to find the coil 2.00.
- (2) Move the cursor to the following position (contact 2.00) and press the [Space] key.



Space



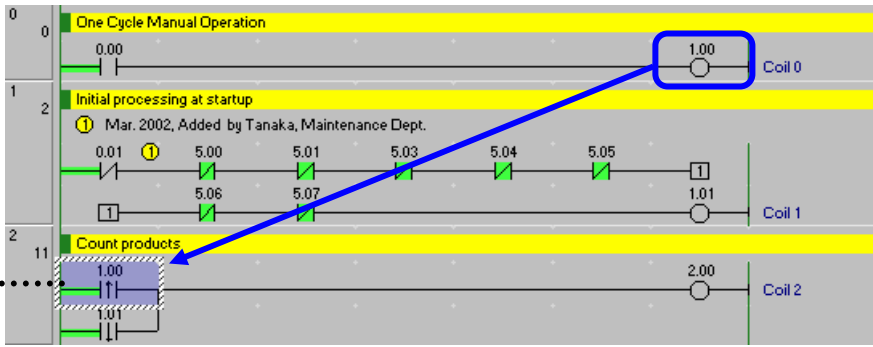
- (3) The reason why the coil 2.00 is not turned on is that the contact 1.00 or 1.01 is not turned on. Suppose the cause is the contact 1.00 and find the coil of 1.00. Move the cursor to the contact 1.00 and press the [Space] key as well as the above operation (2).



Space



- (4) If this rung is not a cause press [Shift]+[Space], and you will be able to go back to the rung before you started to find this rung.



Shift + Space

Online  
to Transfer

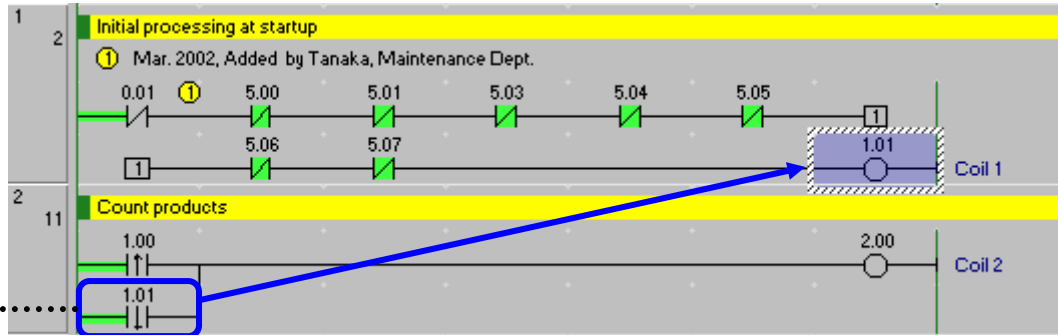
Monitoring

Force On  
Force Off

Program  
Check

Online  
Edit

(5) Then retrace rungs to find a cause from the contact 1.01. As well as the operations so far, move the cursor to the contact 1.01 and press the [Space] key.



(6) The focus moves to the coil 1.01. As it turned out, the cause was the contact 0.01 that was not turned on.

Press the [Space] key to jump from a coil to a contact having the same address as the coil or from a contact to a coil in reverse.

Press the [N] key for another jump from a contact or coil at the cursor position to a next one having the same address.

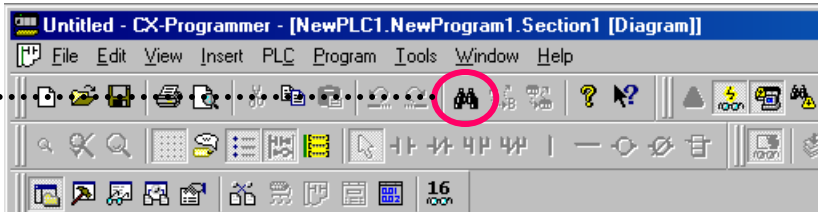
To move back to the position of the last jump, press the [B] key.

This is a useful function available in SYSMAC Support Software.  
CX-Programmer inherits it.

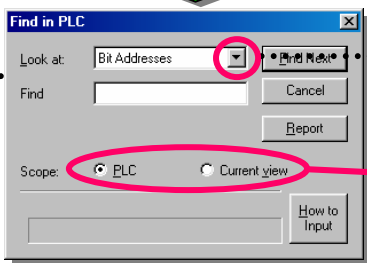
### 18. Find Function - 3 Find by Keyword in Comment

If you enter an operator's name or an operation date in annotations as a note at startup or maintenance, this function finds the bit or word that the name or date is used and displays the result on Output Window.

Click



The [Find] dialog shows up.



Click



Select [All (strings)] from the pull-down menu.

**Scope of Find is specifiable.**

**PLC**  
To find a target from all tasks (programs).

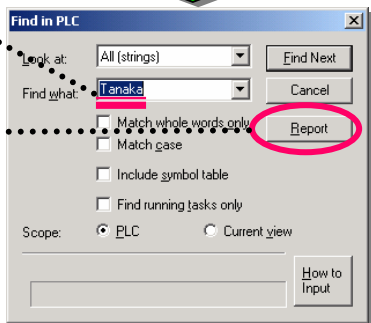
**Current view**  
To find from a section or task (program) being edited  
-> Click an icon in Project Workspace to select a task.

Enter a keyword to find.

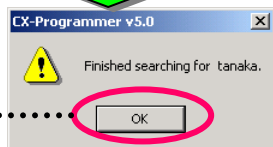


Click

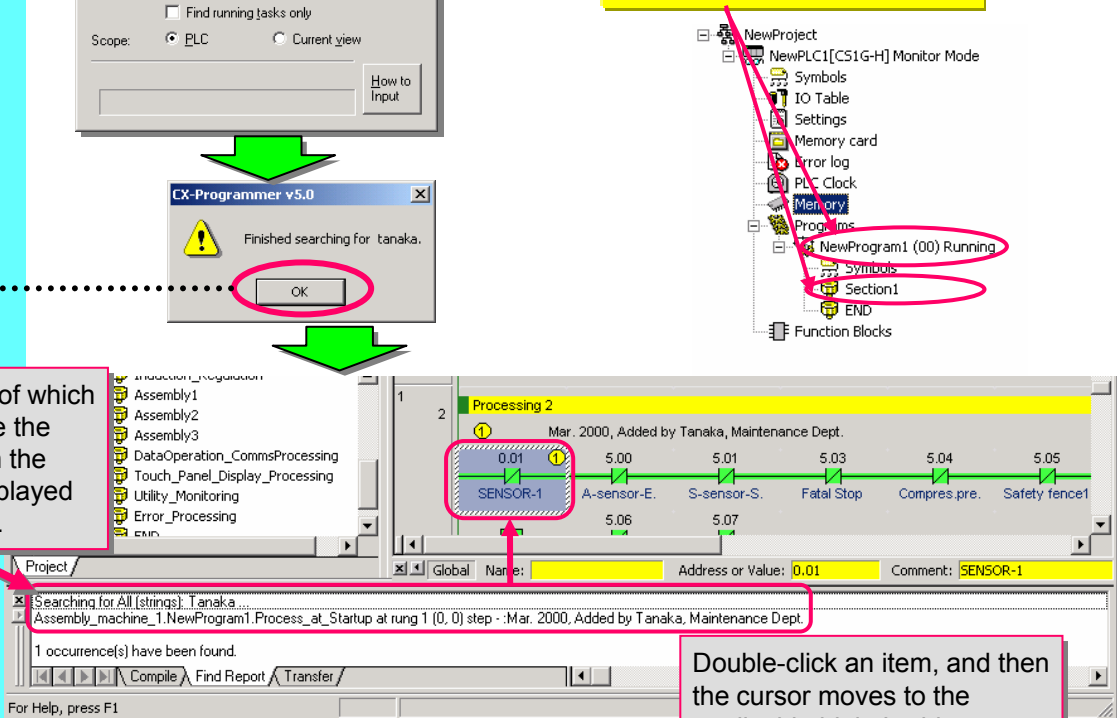
Report



Click [OK].



The contacts/coils of which annotations include the keyword entered in the Find dialog are displayed on Output Window.



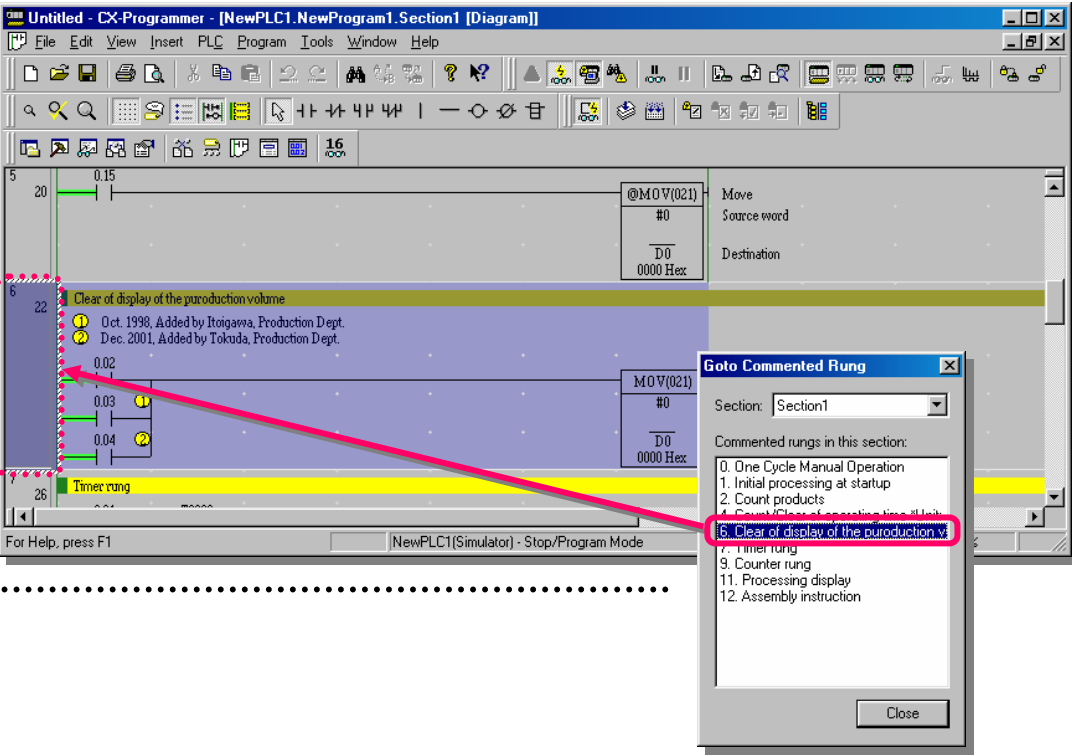
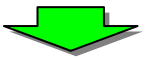
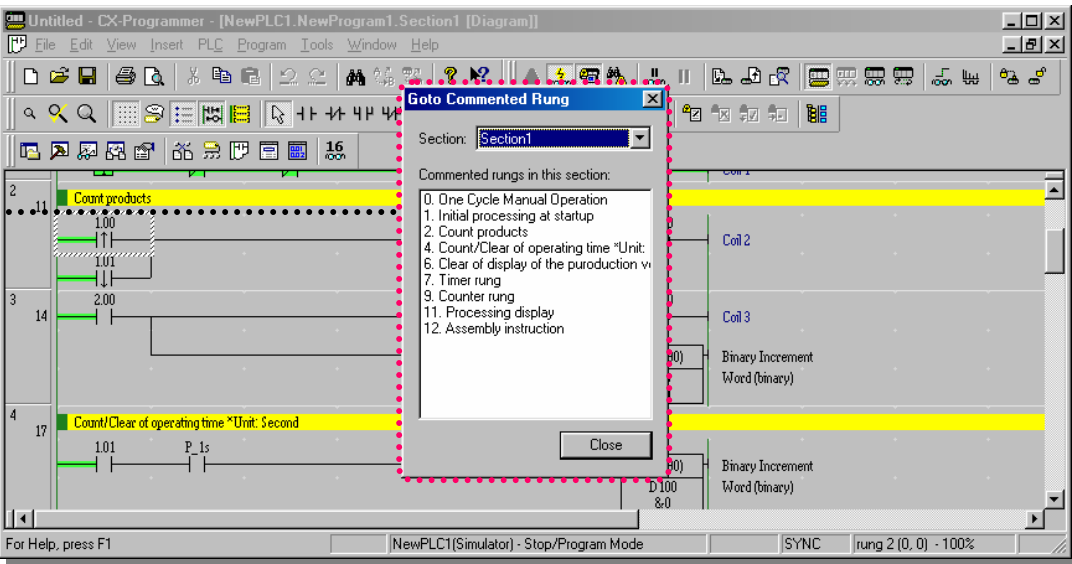
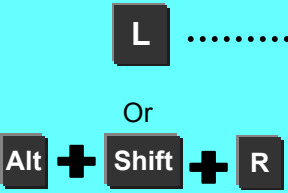
Double-click an item, and then the cursor moves to the applicable bit in Ladder Window.



### 19. Find Function - 4 Go To Rung Comment

This is a function that displays a list of rung comments on the screen and moves the cursor to the position where a selected rung comment is used in the ladder. Rung comments improve the efficiency of debug or maintenance of rungs divided into blocks per function.

A list of the rung comments used in rungs are displayed on a separate window.



Click a rung comment in the list, and the cursor goes to the position where the rung comment is used in the ladder.



Online to Transfer



Monitoring



Force On Force Off



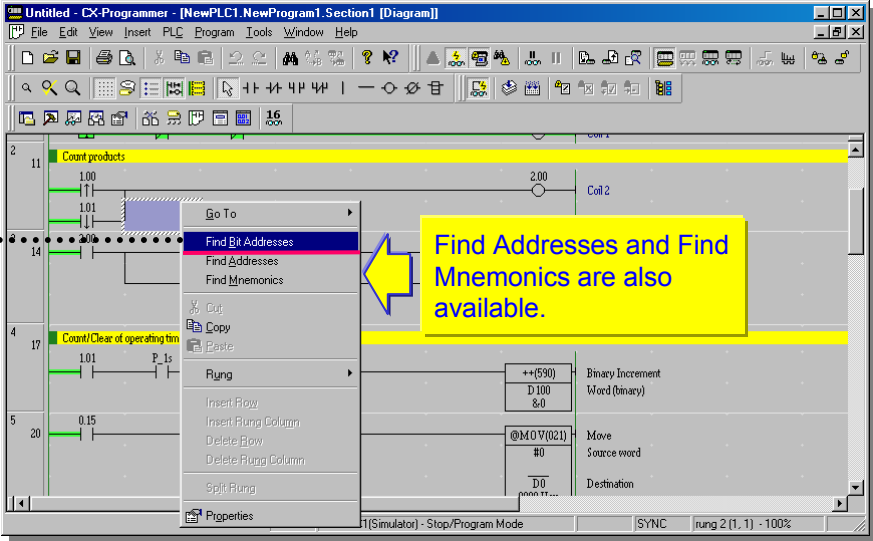
Program Check



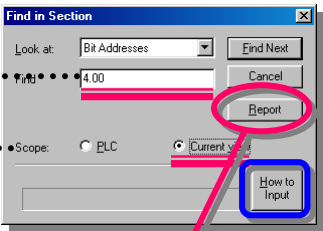
Online Edit

## 20. Find Function - 5 Find Bit Addresses

Click the right mouse button on Ladder Window. Select [Find Bit Addresses] from the popup menu.



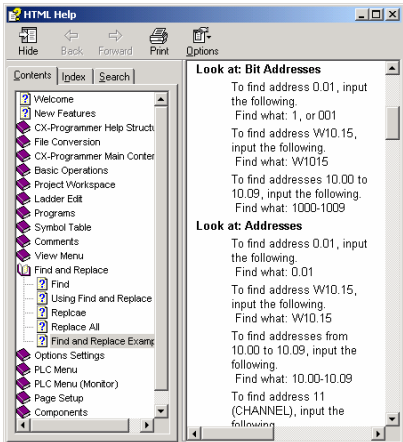
Enter an address (bit number) to find. (period between a channel and a bit is unnecessary.)



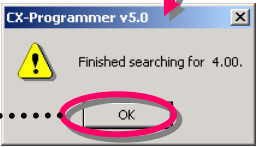
Set the scope of Find (Current view).

Click [Report].

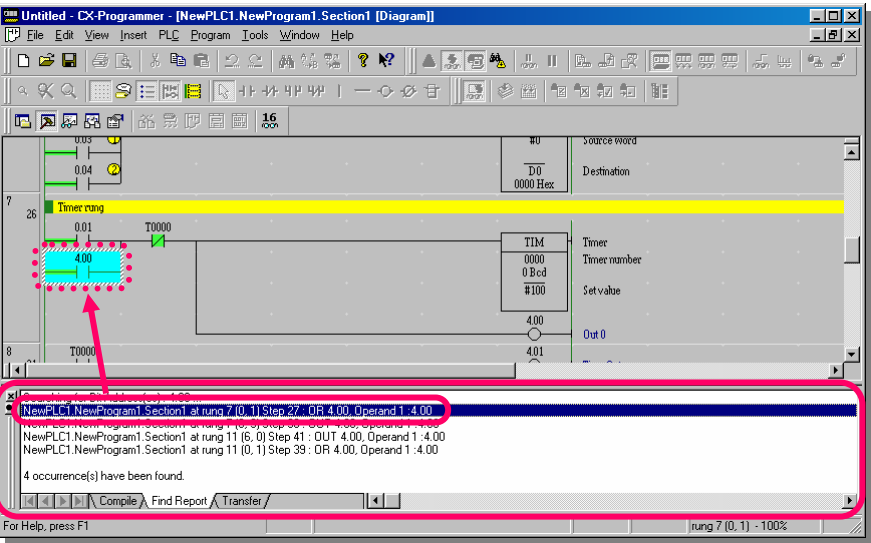
Click the [How to Input] button, and the Help of [Find and Replace Examples] will be displayed.



Click [OK].



Output Window is displayed and the results are listed.

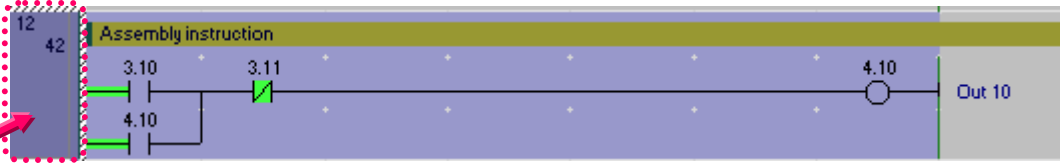


Double-click an item in the list, and the cursor will go to the applicable bit.

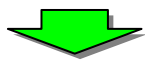


### 21. Online Edit

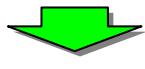
(1) Move the cursor to a rung you want to modify.



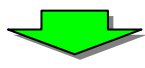
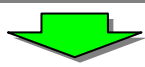
You can also select more than one rung by Drag&Drop with a mouse.



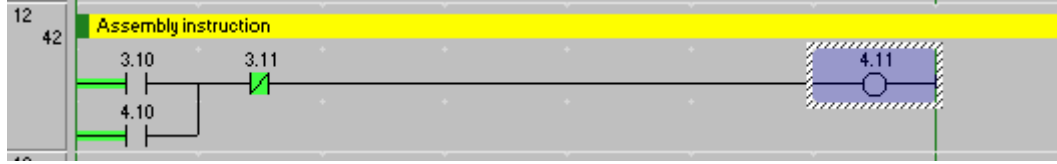
(2) Select [Program] -> [Online Edit] -> [Begin] from the CX-Programmer menu.



(3) Enter a bit number (4.11 in this example) you want to edit to.



(4) Select [Program] -> [Online Edit] -> [Send Changes] from the menu.

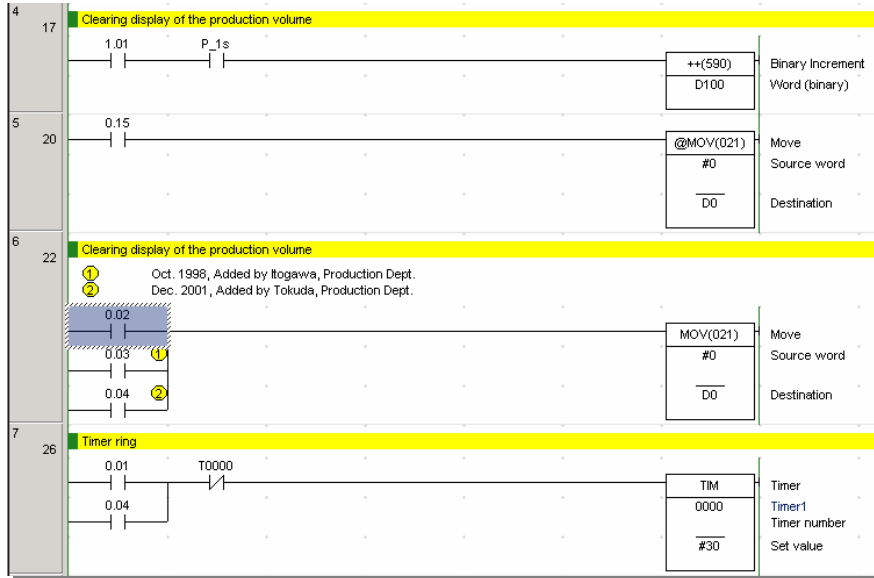


End

# Useful Functions

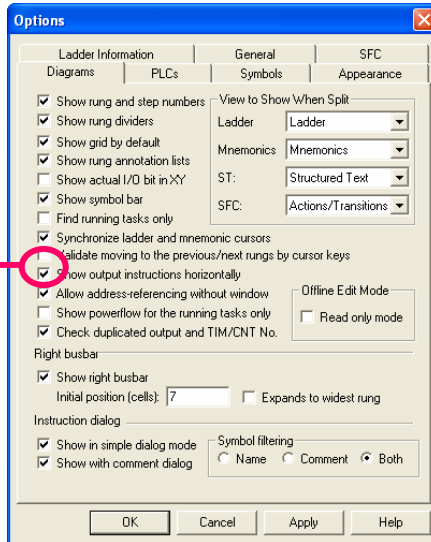
You can select either vertical or horizontal display of output instructions.

## Vertical display of output instructions

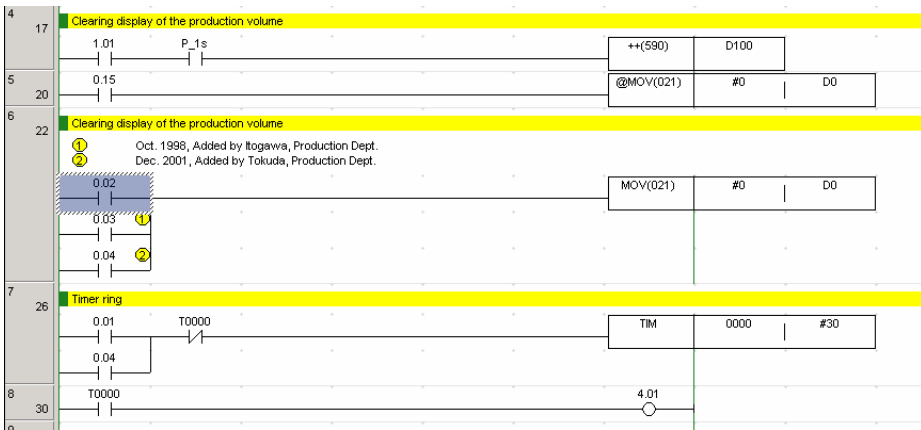


[Tools(T)] -> [Options(O)]

Check the [Show output instructions horizontally (Z)] box.



## Horizontal display of output instructions



**OMRON Corporation**  
Industrial Automation Company  
Control Devices Division H.Q.  
PLC Division

Shiokoji Horikawa, Shimogyo-ku,  
Kyoto, 600-8530 Japan  
Tel: (81) 75-344-7084/Fax: (81) 75-344-7149

**Regional Headquarters**

**OMRON EUROPE B.V.**  
Wegalaan 67-69-2132 JD Hoofddorp  
The Netherlands  
Tel: (31)2356-81-300/Fax: (31)2356-81-388

OMRON Industrial Automation Global: [www.ia.omron.com](http://www.ia.omron.com)

**OMRON ELECTRONICS LLC**  
One Commerce Drive Schaumburg,  
IL 60173-5302 U.S.A.  
Tel: (1) 847-843-7900/Fax: (1) 847-843-7787

**OMRON ASIA PACIFIC PTE. LTD.**  
No. 438A Alexandra Road # 05-05/08 (Lobby 2),  
Alexandra Technopark, Singapore 119967  
Tel: (65) 6835-3011/Fax: (65) 6835-2711

**OMRON (CHINA) CO., LTD.**  
Room 2211, Bank of China Tower,  
200 Yin Cheng Zhong Road,  
PuDong New Area, Shanghai, 200120, China  
Tel: (86) 21-5037-2222/Fax: (86) 21-5037-2200

**Authorized Distributor:**

In the interest of product improvement,  
specifications are subject to change without notice.

**Cat. No. R132-E1-04**